



Guide Price
£350,000

Leasehold

2x  2x  1x 

**Point Central, Sydenham
Road, Croydon, Surrey,
CR0**

OVER 60?

Secure this property
for up to **59% less!**



Video Tour available

cubitt&west
Helping you move forwards



Main features

- Open plan kitchen/living/dining room flooded with natural light
- Huge wrap-around balcony/terrace, ideal for entertaining
- Panoramic views
- Lift access to all floors
- Cash buyers only

Accommodation

SEVENTH FLOOR

Entrance Hall

Kitchen/Living Room: 22'7 x 19'6 at widest point (6.89m x 5.95m)

Balcony/Terrace

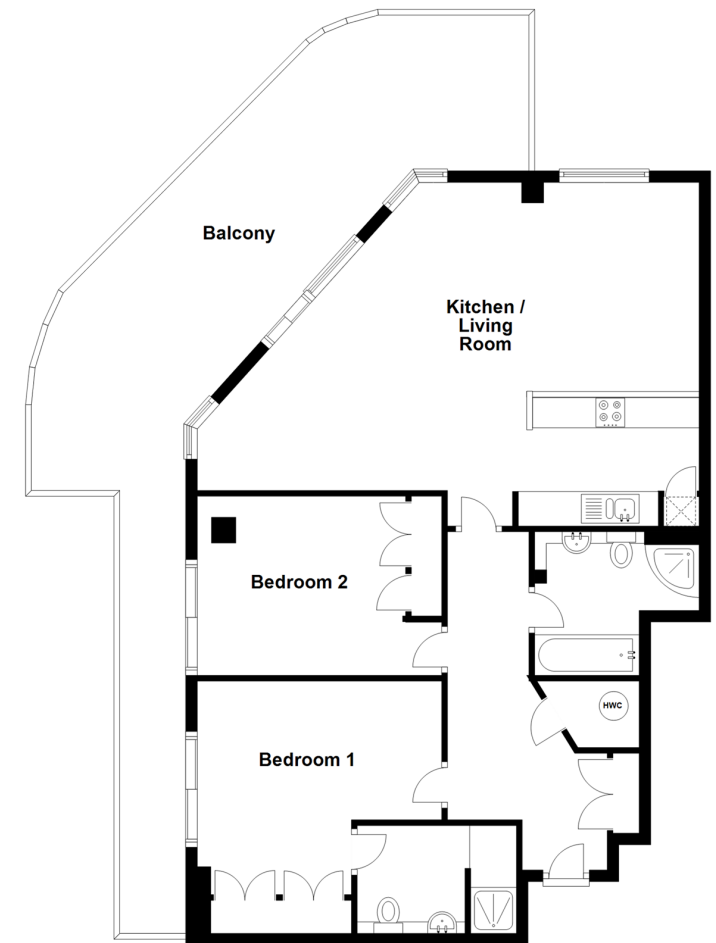
Bedroom 1: 14'2 x 13'9 (4.32m x 4.19m)

En-Suite Shower Room

Bedroom 2: 13'9 x 9'9 (4.19m x 2.97m)

Bathroom

Seventh Floor
Approx. 95.9 sq. metres (1032.4 sq. feet)



Call Shirley - 020 8654 3037 ■ cubittandwest.co.uk

- A private rental licensing scheme applies to some properties in this area, please contact us before proceeding
- Legal advice should be taken to verify fixtures/fittings, planning, alterations and/or lease details
- Appliances & services are untested, dimensions are approximate and floor plans are not to scale
- Through a Homewise Home For Life Plan people aged 60+ can secure this property for up to 59% less, by purchasing a Lifetime Lease.



21709919/20231016/GG/WK