



Guide Price
£550,000

Freehold

3x  1x  2x 

**Oak Avenue, Shirley,
Croydon, Surrey, CR0**

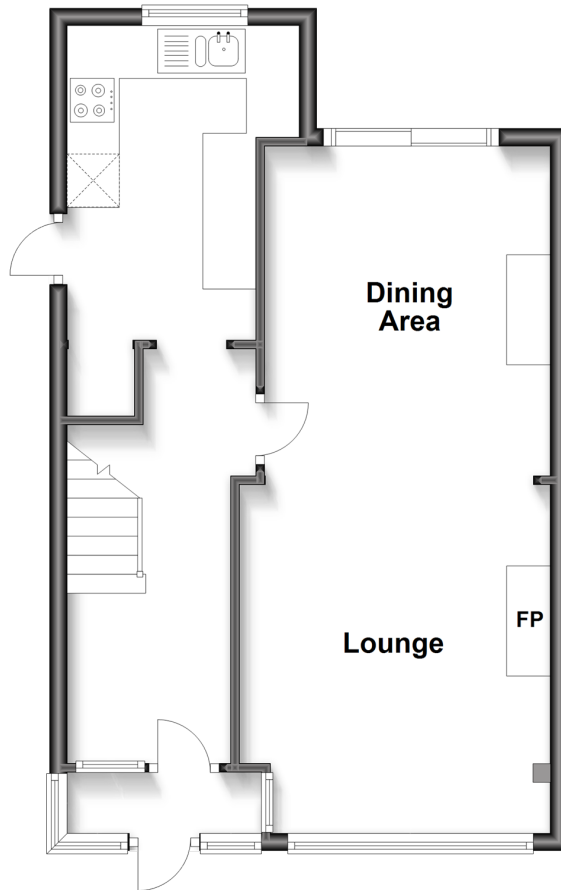
OVER 60?

Secure this property
for up to **59% less!**

cubitt&west
Helping you move forwards

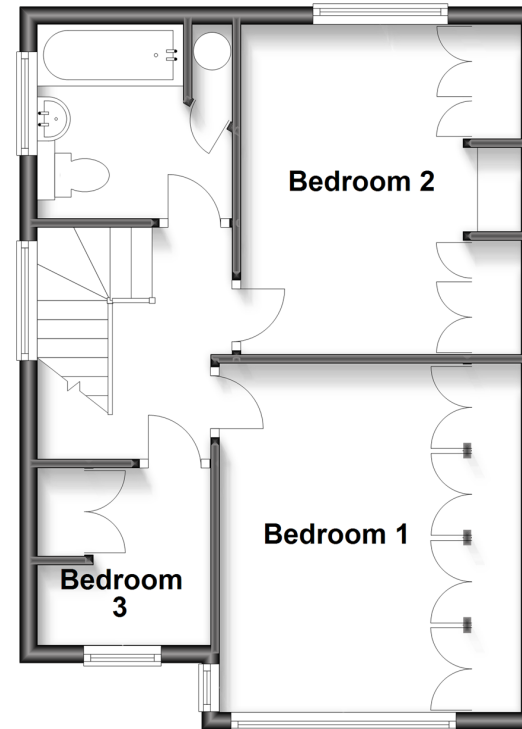
Ground Floor

Approx. 46.6 sq. metres (502.1 sq. feet)



First Floor

Approx. 41.5 sq. metres (446.2 sq. feet)



Accommodation

GROUND FLOOR

Entrance Porch

Entrance Hall

Lounge: 12'10 x 11'9 (3.91m x 3.58m)

Dining Area: 12'1 x 10'9 (3.69m x 3.28m)

Kitchen: 11'9 x 6'7 (3.58m x 2.01m)

FIRST FLOOR

Landing

Bedroom 1: 13'4 x 10'9 into fitted wardrobes (4.07m x 3.28m)

Bedroom 2: 12'5 x 10'5 (3.79m x 3.18m)

Bedroom 3: 6'9 x 6'9 (2.06m x 2.06m)

OUTSIDE

Garage

Off-Road Parking

Rear Garden



Main features

- Excellent semi-detached house
- Spacious lounge and dining area together with fitted kitchen make entertaining easy
- Large rear garden backing onto woodland
- Detached garage and off-road parking
- Great location with easy access to West Wickham, shops and reputable schools



Nearest Schools

Primary: Spring Park 0.2 miles, Oak Lodge 0.6 miles, Benson Primary and Nursery School 0.8 miles

Secondary: Beckmead School 0.5 miles, Glebe School 0.9 miles, Orchard Park High School 1.1 miles



Transport Information

Train Stations: West Wickham 0.8 miles, Eden Park 1.3 miles, Hayes 1.5 miles



Address

Oak Avenue, Shirley, Croydon, Surrey, CR0



Directions

For directions to this property please contact us.



cubitt&west
Helping you move forwards

Call Shirley Branch 020 8654 3037 ■ cubittandwest.co.uk



- A private rental licensing scheme applies to some properties in this area, please contact us before proceeding
- Appliances & services are untested, dimensions are approximate and floor plans are not to scale

- Legal advice should be taken to verify fixtures/fittings, planning, alterations and/or lease details
- Through a Homewise Home For Life Plan people aged 60+ can secure this property for up to 59% less, by purchasing a Lifetime Lease.



21710308/20221109/RF/RF