



Price
£450,000

Freehold

3x  1x  1x 

**Glade Gardens, Shirley,
Croydon, Surrey, CR0**

OVER 60?

Secure this property
for up to **59% less!**

cubitt&west
Helping you move forwards



Main features

- Excellent family home in a sought-after location
- Put your own stamp on the property and make it your own
- Rear garden, off-road parking and garage en-bloc
- Walking distance to bus route
- Situated close to local amenities and reputable schools

Accommodation

GROUND FLOOR

Entrance Porch
Entrance Hall
Lounge: 21'1 maximum x 14'10 maximum (6.43m x 4.52m)
Kitchen: 10'5 x 9'1 (3.18m x 2.77m)

FIRST FLOOR

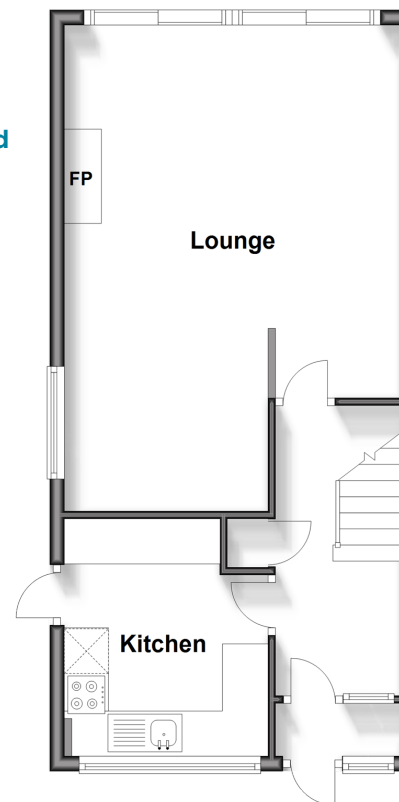
Landing
Bedroom 1: 14'11 x 13'9 into fitted wardrobes (4.55m x 4.19m)
Bedroom 2: 10'0 x 9'2 (3.05m x 2.80m)
Bedroom 3: 8'9 x 5'5 (2.67m x 1.65m)
Bathroom
Separate Toilet

OUTSIDE

Front Garden
Garage En-Bloc
Off-Road Parking
Rear Garden

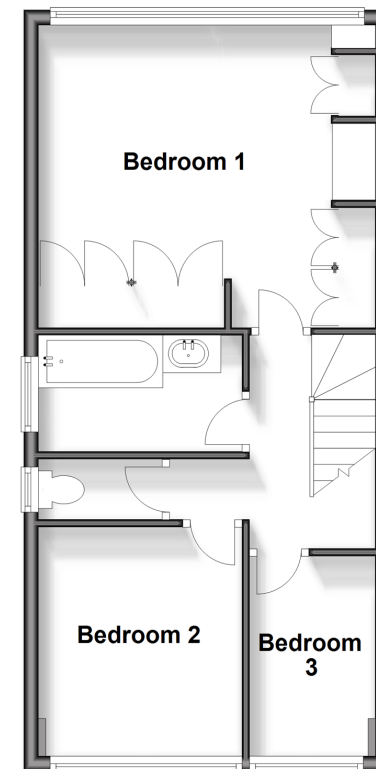
Ground Floor

Approx. 44.1 sq. metres (475.1 sq. feet)



First Floor

Approx. 44.1 sq. metres (475.1 sq. feet)



Call Shirley - 020 8654 3037 ■ cubittandwest.co.uk

- A private rental licensing scheme applies to some properties in this area, please contact us before proceeding
- Legal advice should be taken to verify fixtures/fittings, planning, alterations and/or lease details
- Appliances & services are untested, dimensions are approximate and floor plans are not to scale
- Through a Homewise Home For Life Plan people aged 60+ can secure this property for up to 59% less, by purchasing a Lifetime Lease.



21710639/20240105/GG/CB