



Price

£150,000

Leasehold

1x  1x  1x 

**Bletchingley Close,
Thornton Heath,
Croydon, Surrey, CR7**

cubitt&west
Helping you move forwards



Main features

- **Delightful 1 bedroom bungalow in a cul-de-sac location**
- **Warden-assisted over 60's development**
- **Residents' parking and beautiful communal gardens**
- **Excellent location close to shops**
- **Good transport links**

Accommodation

GROUND FLOOR

Entrance Hall

Lounge: 12'11 x 11'0 (3.94m x 3.36m)

Kitchen: 10'10 x 6'8 (3.30m x 2.03m)

Bedroom 1: 12'0 x 9'7 up to fitted wardrobes (3.66m x 2.92m)

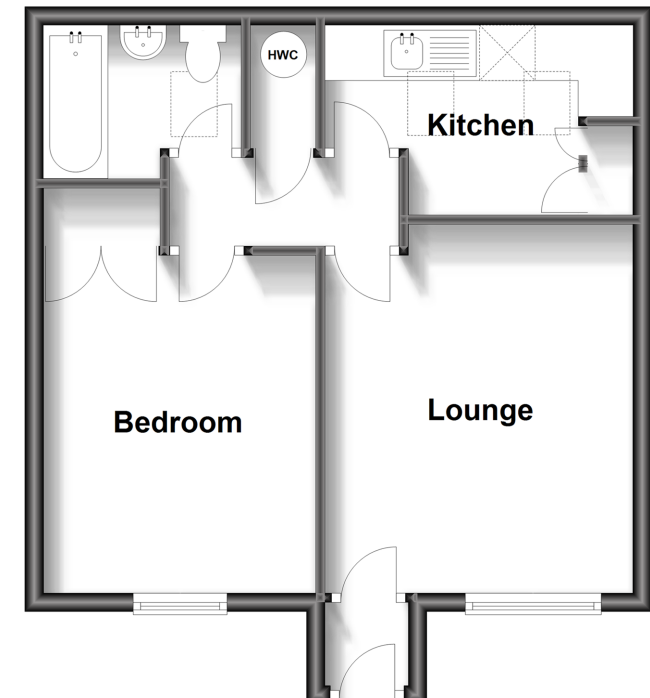
Bathroom

OUTSIDE

Communal Gardens

Residents' Parking

Ground Floor
Approx. 40.1 sq. metres (431.6 sq. feet)



Call Shirley - 020 8654 3037 ■ cubittandwest.co.uk

■ A private rental licensing scheme applies to some properties in this area, please contact us before proceeding

■ Appliances & services are untested, dimensions are approximate and floor plans are not to scale

■ Legal advice should be taken to verify fixtures/fittings, planning, alterations and/or lease details



21710729/20230512/GG/RF