



OVER 60?

Secure this property
for up to **59% less!**

Price

£480,000

Leasehold

2x  2x  1x 

**Pinnacle Apartments,
Saffron Central Square,
Croydon, Surrey, CR0**

cubitt&west
Helping you move forwards



Main features

- **Stunning twenty-seventh floor apartment in the heart of Croydon**
- **Fabulous views from the lounge/dining area**
- **En-suite shower room to bedroom 1**
- **Situated within close proximity to the Centrale shopping centre**
- **Less than a mile away from East and West Croydon stations**

Accommodation

TWENTY-SEVENTH FLOOR

Entrance Hall

Lounge/Dining Area/Kitchen: 31'6 x 12'9 (9.61m x 3.89m)

Bedroom 1: 17'5 x 8'7 (5.31m x 2.62m)

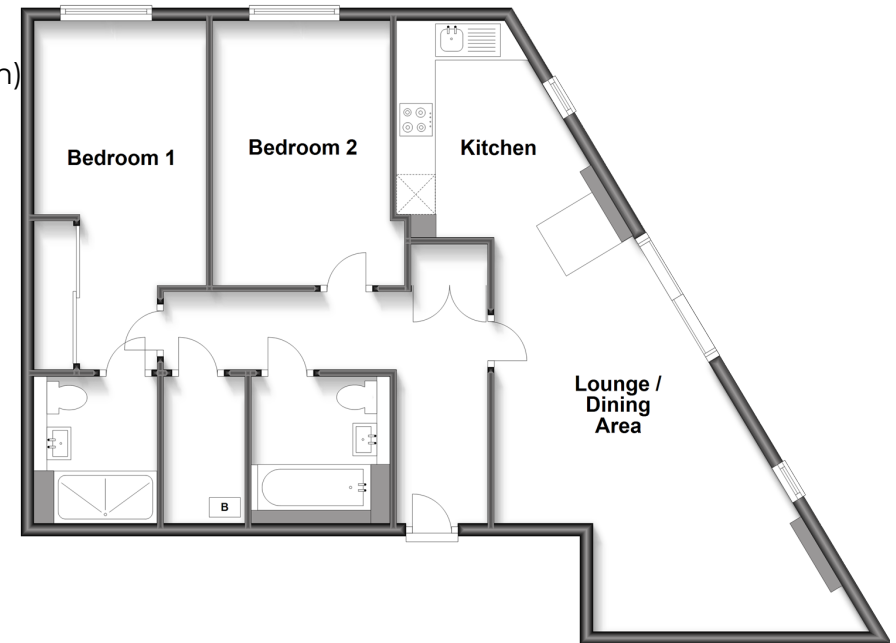
En-Suite Shower Room

Bedroom 2: 13'1 x 9'5 (3.99m x 2.87m)

Bathroom

Twenty Seventh Floor

Approx. 79.8 sq. metres (858.9 sq. feet)



Call Shirley - 020 8654 3037 ■ cubittandwest.co.uk

- A private rental licensing scheme applies to some properties in this area, please contact us before proceeding
- Appliances & services are untested, dimensions are approximate and floor plans are not to scale

- Legal advice should be taken to verify fixtures/fittings, planning, alterations and/or lease details
- Through a Homewise Home For Life Plan people aged 60+ can secure this property for up to 59% less, by purchasing a Lifetime Lease.