



Guide Price
£450,000

Freehold

3x  1x  1x 

**Queen Street, Croydon,
Surrey, CR0**

OVER 60?

Secure this property
for up to **59% less!**



Video Tour available

cubitt&west
Helping you move forwards

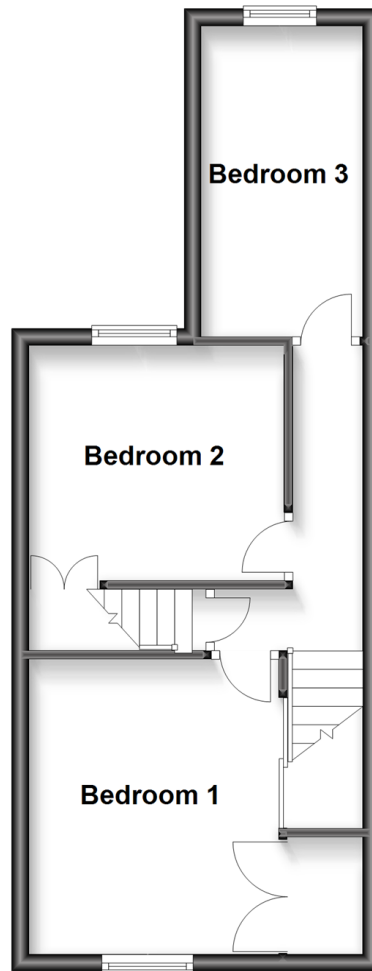
Ground Floor

Approx. 46.6 sq. metres (501.6 sq. feet)



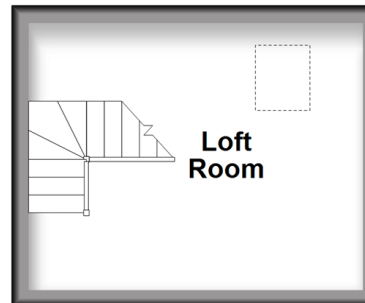
First Floor

Approx. 35.4 sq. metres (381.1 sq. feet)



Second Floor

Approx. 12.4 sq. metres (133.2 sq. feet)



Accommodation

GROUND FLOOR

Entrance Hall

Lounge: 23'5 x 13'0 (7.14m x 3.97m)

Kitchen: 12'8 x 6'1 (3.86m x 1.86m)

Lean-To: 11'1 x 6'4 (3.38m x 1.93m)

Bathroom

FIRST FLOOR

Landing

Bedroom 1: 11'10 x 6'8 (3.61m x 2.03m)

Bedroom 2: 10'11 x 9'7 (3.33m x 2.92m)

Bedroom 3: 10'0 x 9'1 (3.05m x 2.77m)

SECOND FLOOR

Loft Room: 13'2 x 10'6 (4.02m x 3.20m)

OUTSIDE

Rear Garden



Main features

- Excellent mid-terrace house with bonus loft-room
- Useful lean-to which can store your extra belongings
- Private rear garden
- Spacious lounge is ideal for entertaining family and friends
- Situated close to transport and all local amenities



Nearest Schools

Primary: Howard Primary 0.2 miles, Parish Church CofE Junior School 0.3 miles, Park Hill Junior School 0.5 miles

Secondary: Old Palace of John Whitgift School 0.3 miles, St Andrew's CofE Voluntary Aided High School 0.3 miles,



Transport Information

Train Stations: Waddon 0.4 miles, South Croydon 0.5 miles, East Croydon 0.5 miles



Address

Queen Street, Croydon, Surrey, CR0



Directions

For directions to this property please contact us.



cubitt&west
Helping you move forwards

Call Shirley Branch 020 8654 3037 ■ cubittandwest.co.uk



- A private rental licensing scheme applies to some properties in this area, please contact us before proceeding
- Appliances & services are untested, dimensions are approximate and floor plans are not to scale

- Legal advice should be taken to verify fixtures/fittings, planning, alterations and/or lease details
- Through a Homewise Home For Life Plan people aged 60+ can secure this property for up to 59% less, by purchasing a Lifetime Lease.



21710866/20230809/PH/PH