

**Guide Price**  
**£260,000**

**Leasehold**

2x  1x  1x 

**Newnham Close,  
Thornton Heath, Surrey,  
CR7**

**OVER 60?**

Secure this property  
for up to **59% less!**



Video Tour available

**cubitt & west**  
Helping you move forwards





## Main features

- **Excellent ground floor maisonette**
- **Allocated parking and communal gardens**
- **Spacious lounge/diner is ideal for entertaining friends**
- **Situated close to transport and all local amenities**
- **Put your own stamp on the property and make it your own**

## Accommodation

### GROUND FLOOR

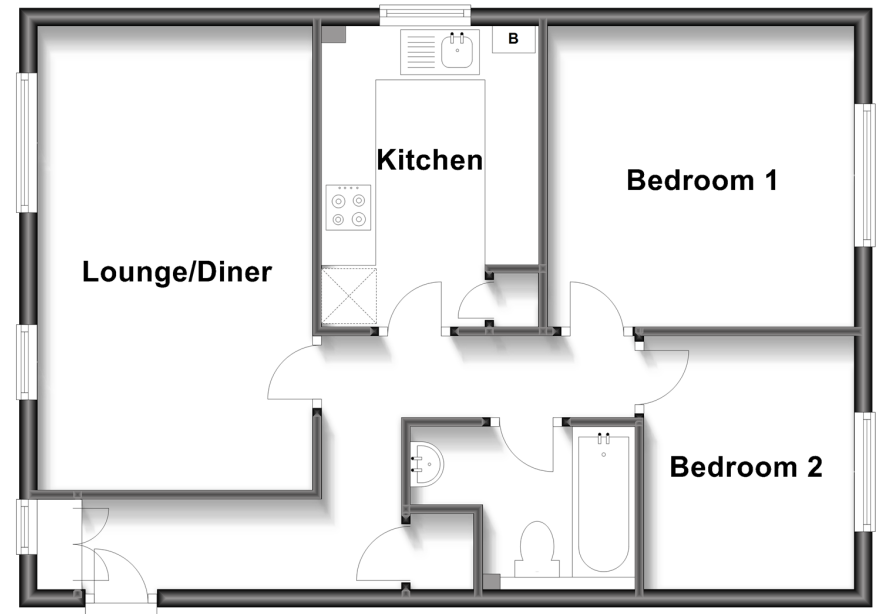
Entrance Hall  
 Lounge/Diner: 17'0 x 10'10 (5.19m x 3.30m)  
 Kitchen: 10'11 x 7'11 (3.33m x 2.41m)  
 Bedroom 1: 11'3 x 11'0 (3.43m x 3.36m)  
 Bedroom 2: 9'3 x 7'8 (2.82m x 2.34m)  
 Bathroom

### OUTSIDE

Allocated Parking  
 Communal Gardens

### Ground Floor

Approx. 57.3 sq. metres (617.1 sq. feet)



**Call Shirley - 020 8654 3037 ■ [cubittandwest.co.uk](http://cubittandwest.co.uk)**

- A private rental licensing scheme applies to some properties in this area, please contact us before proceeding
- Appliances & services are untested, dimensions are approximate and floor plans are not to scale

- Legal advice should be taken to verify fixtures/fittings, planning, alterations and/or lease details
- Through a Homewise Home For Life Plan people aged 60+ can secure this property for up to 59% less, by purchasing a Lifetime Lease.