



OVER 60?

Secure this property
for up to **59% less!**



Video Tour available

Guide Price

£240,000

Leasehold

2x  1x  1x 

**Adams Way, Croydon,
Surrey, CR0**

cubitt&west
Helping you move forwards



Main features

- **Fabulous 2 bedroom ground floor apartment**
- **Spacious lounge and separate kitchen**
- **Allocated parking and communal gardens**
- **Bedroom 1 with dressing area**
- **Excellent transport links, great first time or investment purchase**

Accommodation

GROUND FLOOR

Entrance Hall

Lounge: 18'3 x 10'6 (5.57m x 3.20m)

Kitchen: 8'2 x 7'6 (2.49m x 2.29m)

Bedroom 1: 11'1 x 8'4 (3.38m x 2.54m)

Dressing Area: 6'3 maximum x 4'9 (1.91m x 1.45m)

Bedroom 2: 11'1 maximum x 5'9 (3.38m x 1.75m)

Bathroom

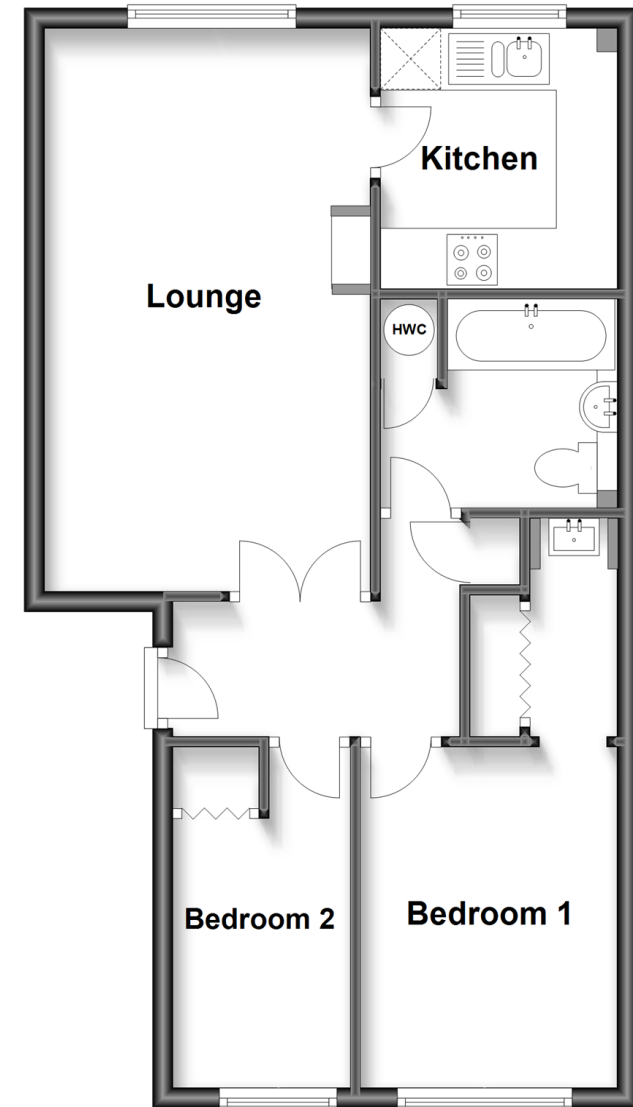
OUTSIDE

Allocated Parking

Communal Grounds

Ground Floor

Approx. 53.2 sq. metres (572.2 sq. feet)



Call Shirley - 020 8654 3037 ■ cubittandwest.co.uk

- A private rental licensing scheme applies to some properties in this area, please contact us before proceeding
- Legal advice should be taken to verify fixtures/fittings, planning, alterations and/or lease details
- Appliances & services are untested, dimensions are approximate and floor plans are not to scale
- Through a Homewise Home For Life Plan people aged 60+ can secure this property for up to 59% less, by purchasing a Lifetime Lease.



21710913/20230527/GG/RF