



OVER 60?

Secure this property
for up to **59% less!**



Video Tour available

Guide Price

£600,000

Freehold

5x  2x  2x 

**Ashburton Avenue,
Croydon, Surrey, CR0**

cubitt & west
Helping you move forwards

Accommodation

GROUND FLOOR

Entrance Hall

Lounge: 16'3 x 12'4 (4.96m x 3.76m)

Dining Room: 14'2 x 11'1 (4.32m x 3.38m)

Kitchen: 21'10 x 8'2 (6.66m x 2.49m)

Office: 11'5 x 9'1 (3.48m x 2.77m)

Cloakroom

FIRST FLOOR

Landing

Bedroom 1: 13'3 x 11'5 (4.04m x 3.48m)

Bedroom 2: 13'3 x 11'11 (4.04m x 3.63m)

Bedroom 5: 8'10 x 6'6 (2.69m x 1.98m)

Bathroom

SECOND FLOOR

Landing

Bedroom 3: 12'6 x 10'11 (3.81m x 3.33m)

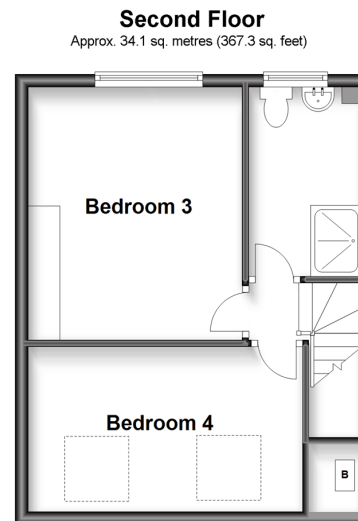
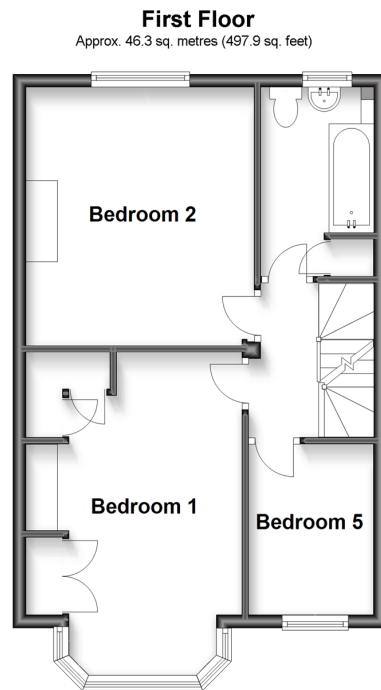
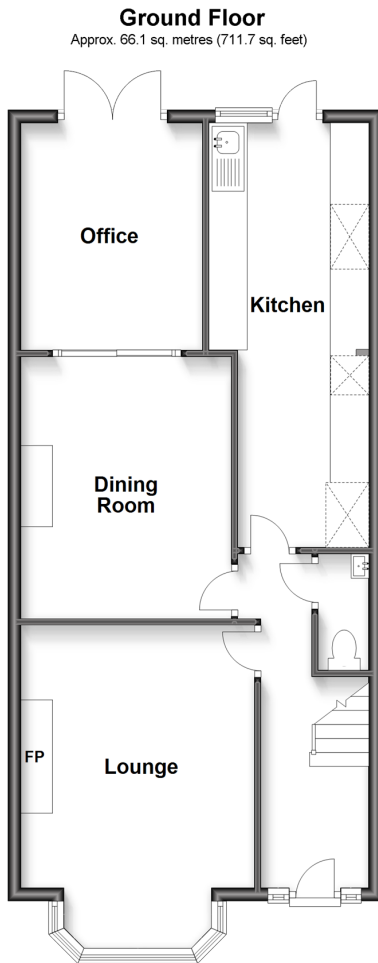
Bedroom 4: 13'9 x 8'3 (4.19m x 2.52m)

Shower Room

OUTSIDE

Driveway

Rear Garden





Main features

- Very well-presented mid-terrace house in an ideal location
- Ample room for any growing family
- Useful office space where you can store extra belongings or work from home
- Driveway for several cars
- Lovely rear garden
- Situated close to bus routes and all local amenities



Nearest Schools

Primary: Woodside Junior School 0.5 miles, St Thomas Becket Catholic Primary 0.7 miles

Secondary: Trinity School 0.3 miles, Shirley High School Performing Arts College 0.8 miles



Transport Information

Train Stations: East Croydon 1.2 miles, Selhurst 1.3 miles, Norwood Junction 1.3 miles



Address

Ashburton Avenue, Croydon, Surrey, CR0



Directions

For directions to this property please contact us.



cubitt&west
Helping you move forwards

Call Shirley Branch 020 8654 3037 ■ [cubittandwest.co.uk](https://www.cubittandwest.co.uk)



- A private rental licensing scheme applies to some properties in this area, please contact us before proceeding
- Appliances & services are untested, dimensions are approximate and floor plans are not to scale

- Legal advice should be taken to verify fixtures/fittings, planning, alterations and/or lease details
- Through a Homewise Home For Life Plan people aged 60+ can secure this property for up to 59% less, by purchasing a Lifetime Lease.



21710936/20230203/GG/PH