



**Price**  
**£285,000**

**Leasehold**

1x  1x  1x 

**Dagnall Park, South  
Norwood, London, SE25**

**OVER 60?**

Secure this property  
for up to **59% less!**



Video Tour available

**cubitt&west**  
Helping you move forwards





## Main features

- Excellent first floor flat in an ideal location
- Spacious lounge makes entertaining easy no matter what the occasion
- Allocated parking and car port
- Relax with your friends on the balcony
- Situated close to transport and all local amenities

## Accommodation

### FIRST FLOOR

Entrance Hall

Lounge/Kitchen: 26'6 x 10'3 (8.08m x 3.13m)

Balcony

Bedroom 1: 15'2 x 11'5 (4.63m x 3.48m)

Bathroom: 7'0 x 5'5 (2.14m x 1.65m)

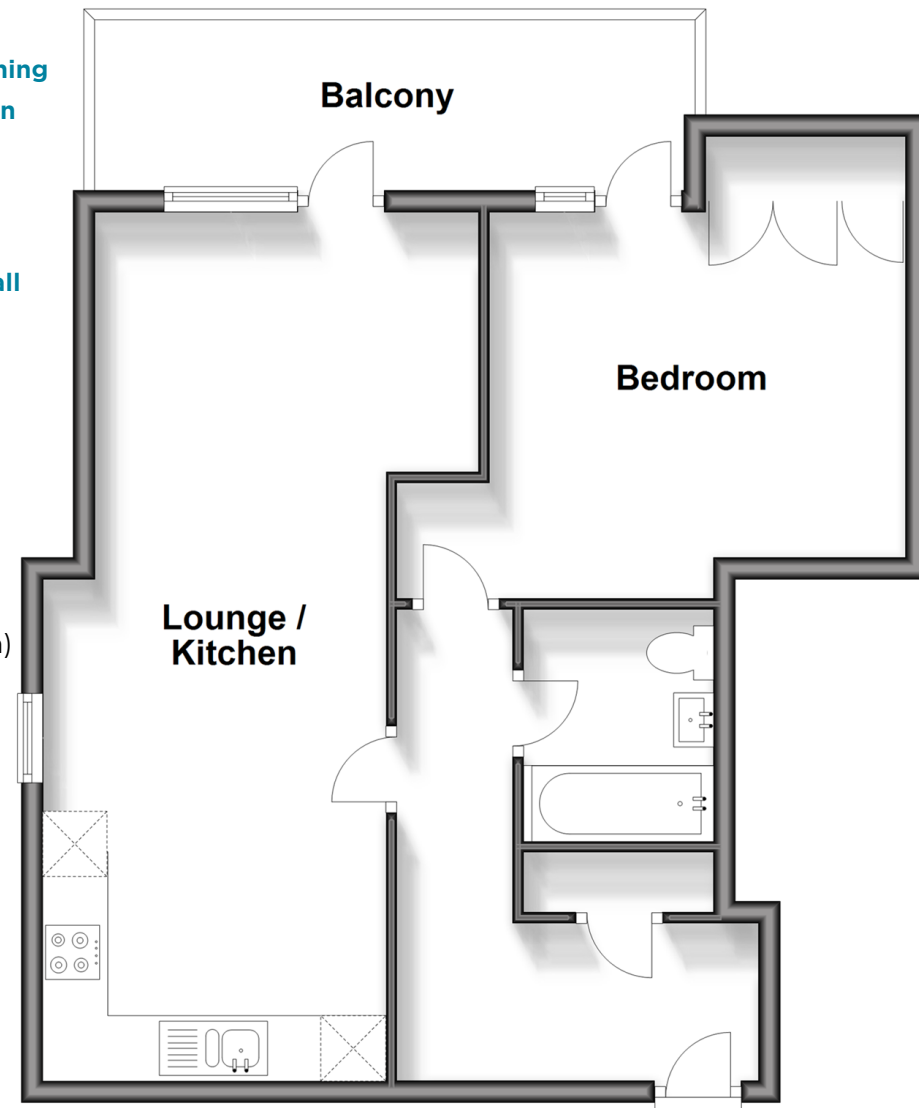
### OUTSIDE

Allocated Parking

EV Charging Port

## First Floor

Approx. 55.7 sq. metres (599.4 sq. feet)



**Call Shirley - 020 8654 3037 ■ [cubittandwest.co.uk](http://cubittandwest.co.uk)**

- A private rental licensing scheme applies to some properties in this area, please contact us before proceeding
- Legal advice should be taken to verify fixtures/fittings, planning, alterations and/or lease details
- Appliances & services are untested, dimensions are approximate and floor plans are not to scale
- Through a Homewise Home For Life Plan people aged 60+ can secure this property for up to 59% less, by purchasing a Lifetime Lease.



21710950/20240304/BF/PH