



**Guide Price**  
**£325,000**

**Share of  
Freehold**

2x  1x  1x 

**Bromley Road,  
Beckenham, Kent, BR3**

**OVER 60?**

Secure this property  
for up to **59% less!**



Video Tour available

**cubitt&west**  
Helping you move forwards



## Main features

- Very well-presented split-level first and second floor flat
- Spacious lounge/kitchen makes preparing delicious meals easy
- Eaves space with potential for extension (subject to planning permission being obtained)
- Communal gardens
- Transport links are second to none

## Accommodation

### FIRST FLOOR

Entrance Hall

Bedroom 2: 15'3 x 10'6 (4.65m x 3.20m)

### SECOND FLOOR

Landing

Lounge/Kitchen: 16'6 x 15'4 (5.03m x 4.68m)

Bedroom 1: 14'4 x 12'2 (4.37m x 3.71m)

Bathroom

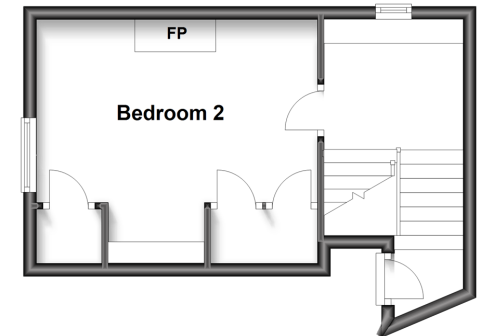
Eaves : 14'5 x 9'6 (4.40m x 2.90m)

### OUTSIDE

Communal Gardens

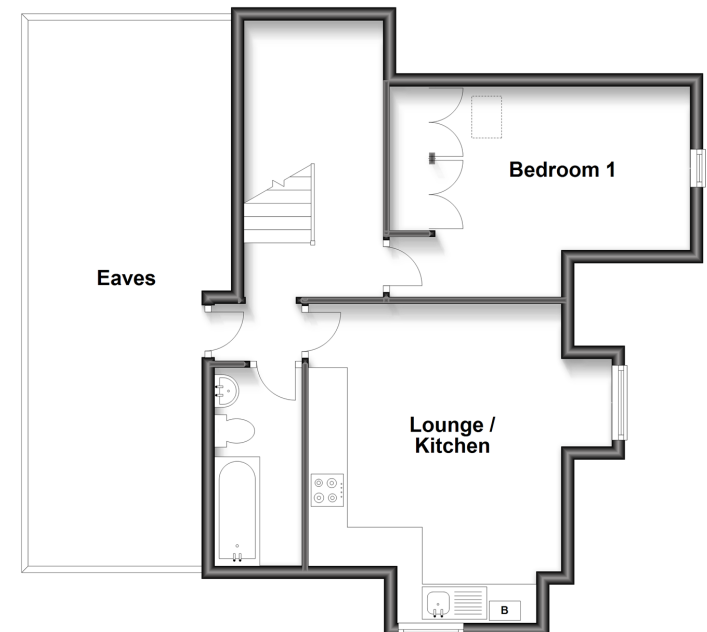
### First Floor

Approx. 24.9 sq. metres (268.2 sq. feet)



### Second Floor

Approx. 48.2 sq. metres (519.3 sq. feet)



**Call Shirley - 020 8654 3037 ■ [cubittandwest.co.uk](http://cubittandwest.co.uk)**

- A private rental licensing scheme applies to some properties in this area, please contact us before proceeding
- Legal advice should be taken to verify fixtures/fittings, planning, alterations and/or lease details
- Appliances & services are untested, dimensions are approximate and floor plans are not to scale
- Through a Homewise Home For Life Plan people aged 60+ can secure this property for up to 59% less, by purchasing a Lifetime Lease.



21710955/20230106/CR3/WK