



OVER 60?

Secure this property
for up to **59% less!**



Video Tour available

Guide Price
£350,000

Freehold

2x  1x  2x 

**Bridport Road, Thornton
Heath, Surrey, CR7**

cubitt&west
Helping you move forwards



Main features

- End-of-terrace house in an ideal location
- In need of modernisation
- Private rear garden
- Put your own stamp on it and make it your own
- Situated close to shops, buses and all local amenities

Accommodation

SPLIT LEVEL GROUND FLOOR

Entrance Hall

Lounge: 13'1 x 9'8 (3.99m x 2.95m)

Dining Room: 11'9 x 7'9 (3.58m x 2.36m)

Kitchen: 14'1 x 8'2 (4.30m x 2.49m)

SPLIT LEVEL FIRST FLOOR

Bedroom 1: 12'11 x 10'9 (3.94m x 3.28m)

Bedroom 2: 11'8 x 7'9 (3.56m x 2.36m)

Bathroom

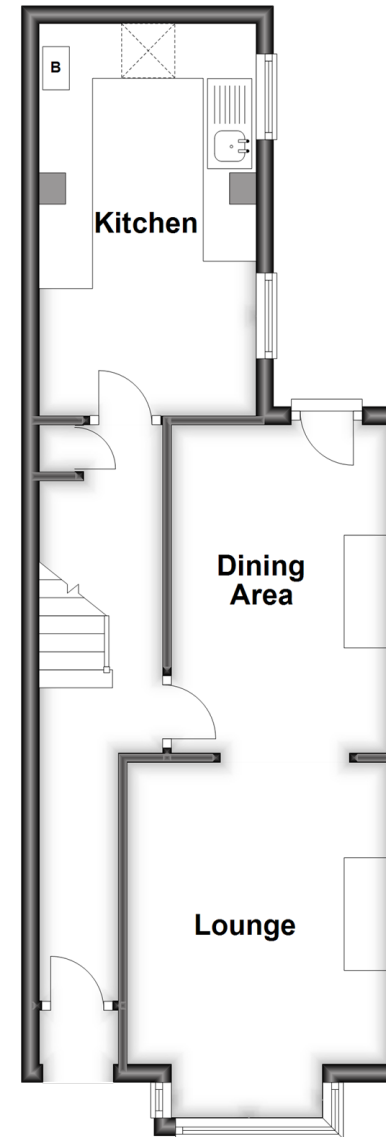
OUTSIDE

Front Garden

Rear Garden

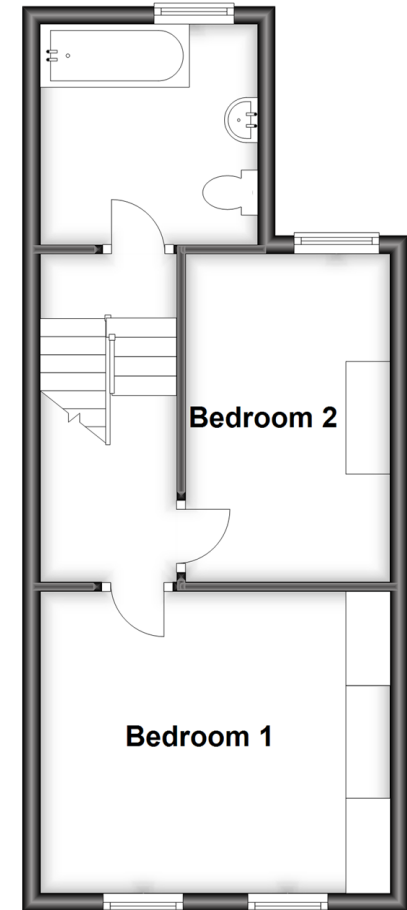
Split Level Ground Floor

Approx. 39.2 sq. metres (422.1 sq. feet)



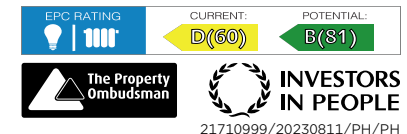
Split Level First Floor

Approx. 34.2 sq. metres (368.4 sq. feet)



Call Shirley - 020 8654 3037 ■ cubittandwest.co.uk

- A private rental licensing scheme applies to some properties in this area, please contact us before proceeding
- Legal advice should be taken to verify fixtures/fittings, planning, alterations and/or lease details
- Appliances & services are untested, dimensions are approximate and floor plans are not to scale
- Through a Homewise Home For Life Plan people aged 60+ can secure this property for up to 59% less, by purchasing a Lifetime Lease.



21710999/20230811/PH/PH