



Guide Price
£390,000

Freehold

3x  1x  2x 

**Osward, Courtwood
Lane, Forestdale,
Croydon, Surrey, CR0**

OVER 60?

Secure this property
for up to **59% less!**



Video Tour available

cubitt&west
Helping you move forwards



Main features

- **Excellent mid-terrace house in a popular development**
- **Spacious lounge means entertaining guests will be easy**
- **Pleasant rear garden**
- **Garage en-bloc**
- **Situated close to transport and all local amenities**

Accommodation

GROUND FLOOR

Entrance Hall

Lounge: 20'10 x 13'1 (6.35m x 3.99m)

Dining Area: 11'8 maximum x 10'5 (3.56m x 3.18m)

Kitchen: 11'7 x 10'2 (3.53m x 3.10m)

FIRST FLOOR

Bedroom 1: 13'3 x 11'5 (4.04m x 3.48m)

Bedroom 2: 11'6 x 9'8 (3.51m x 2.95m)

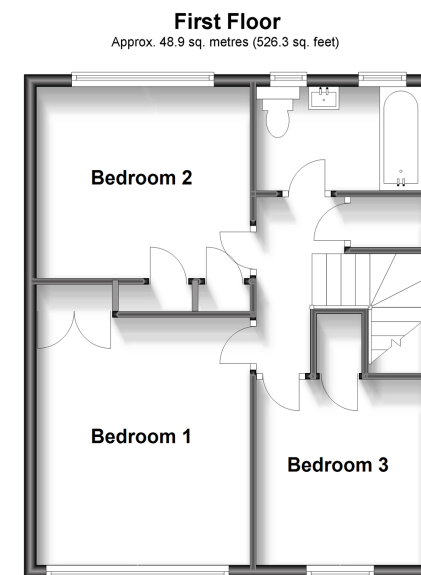
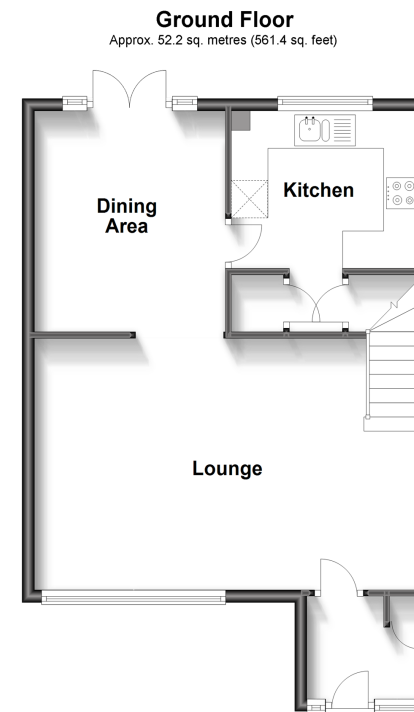
Bedroom 3: 10'1 x 9'2 (3.08m x 2.80m)

Bathroom

OUTSIDE

Garage En-Bloc

Rear Garden



Call Shirley - 020 8654 3037 ■ cubittandwest.co.uk

- A private rental licensing scheme applies to some properties in this area, please contact us before proceeding
- Appliances & services are untested, dimensions are approximate and floor plans are not to scale

- Legal advice should be taken to verify fixtures/fittings, planning, alterations and/or lease details
- Through a Homewise Home For Life Plan people aged 60+ can secure this property for up to 59% less, by purchasing a Lifetime Lease.