



OVER 60?

Secure this property
for up to **59% less!**

Price

£600,000

Freehold

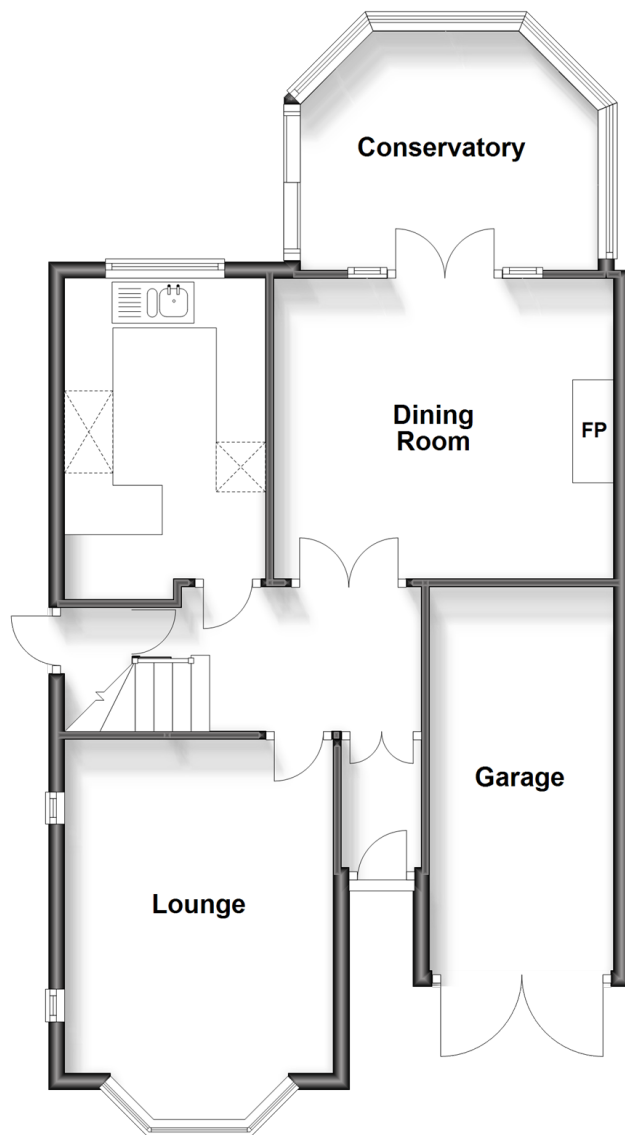
3x  1x  2x 

**Grange Avenue, South
Norwood, London, SE25**

cubitt&west
Helping you move forwards

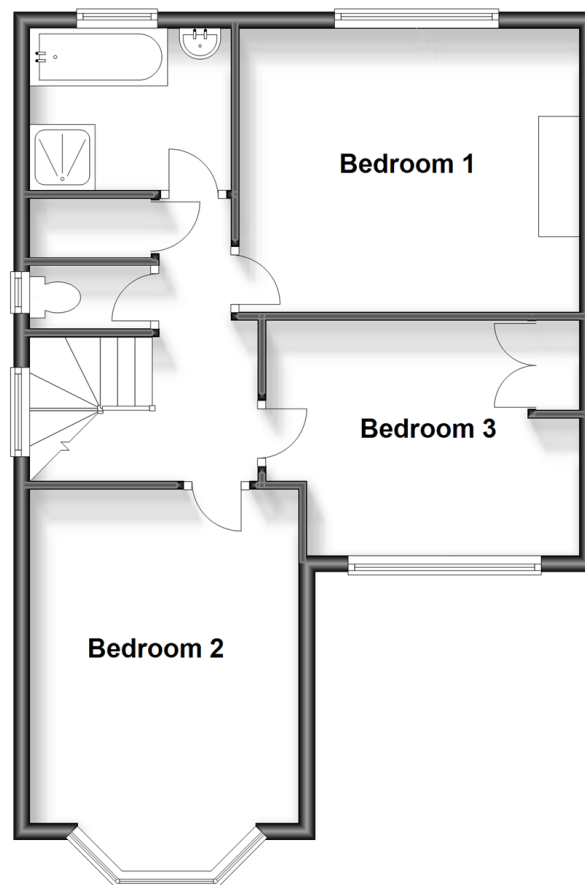
Ground Floor

Approx. 69.3 sq. metres (745.6 sq. feet)



First Floor

Approx. 53.9 sq. metres (579.7 sq. feet)



Accommodation

GROUND FLOOR

Entrance Hall

Lounge: 16'3 x 10'9 (4.96m x 3.28m)

Dining Room: 13'5 x 12'1 (4.09m x 3.69m)

Kitchen: 12'0 x 8'0 (3.66m x 2.44m)

Conservatory: 12'1 x 9'6 (3.69m x 2.90m)

FIRST FLOOR

Landing

Bedroom 1: 16'4 x 10'10 (4.98m x 3.30m)

Bedroom 2: 13'9 x 11'2 (4.19m x 3.41m)

Bedroom 3: 10'8 x 9'3 (3.25m x 2.82m)

Bathroom

Separate Toilet

OUTSIDE

Front Garden

Integral Garage

Off-Road Parking

Rear Garden



Main features

- Delightful family home in an ideal location
- Cul-de-sac position with views across South London
- Excellent entertaining space in the lounge and separate dining room
- Private rear garden, driveway and garage
- Situated close to transport and all local amenities



Nearest Schools

Primary: Cypress Junior School 0.2 miles, All Saints CofE Junior School 0.3 miles
Secondary: Westwood Girls College for Languages and Arts 0.5 miles, Harris City Academy Crystal Palace 0.5 miles



Transport Information

Train Stations: Thornton Heath 0.8 miles, Norwood Junction 0.8 miles, Crystal Palace 0.9 miles



Address

Grange Avenue, South Norwood, London, SE25



Directions

For directions to this property please contact us.



cubitt&west
Helping you move forwards

Call Shirley Branch 020 8654 3037 ■ cubittandwest.co.uk



- The seller is a person connected with Cubitt & West as defined in the Estate Agents Act 1979
- Legal advice should be taken to verify fixtures/fittings, planning, alterations and/or lease details
- Through a Homewise Home For Life Plan people aged 60+ can secure this property for up to 59% less, by purchasing a Lifetime Lease.

- A private rental licensing scheme applies to some properties in this area, please contact us before proceeding
- Appliances & services are untested, dimensions are approximate and floor plans are not to scale



21711098/20231004/GG/RF