



Guide Price
£250,000

Leasehold

1x  1x  1x 

**Davidson Road,
Croydon, Surrey, CR0**

OVER 60?

Secure this property
for up to **59% less!**

cubitt&west
Helping you move forwards



Main features

- Stunning first floor conversion maisonette in a fantastic location
- 900+ year lease
- Moments away from local high street and East Croydon station
- Ample storage and large bathroom
- Shared garden for entertaining friends and family in the summer

Accommodation

SPLIT LEVEL FIRST FLOOR

Entrance Hall

Lounge: 14'2 x 10'11 (4.32m x 3.33m)

Kitchen: 11'6 x 8'8 (3.51m x 2.64m)

Bedroom 1: 11'6 x 10'4 (3.51m x 3.15m)

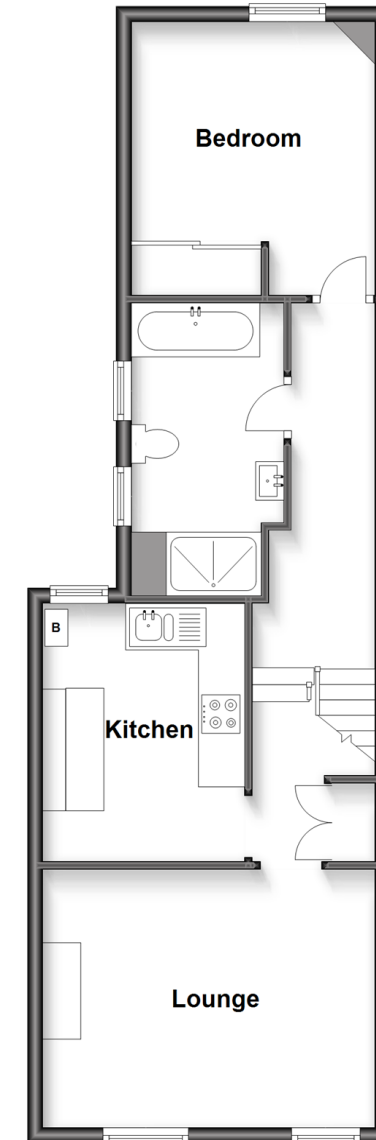
Bathroom

OUTSIDE

Communal Gardens

Split Level First Floor

Approx. 53.6 sq. metres (577.5 sq. feet)



Call Shirley - 020 8654 3037 ■ cubittandwest.co.uk

- A private rental licensing scheme applies to some properties in this area, please contact us before proceeding
- Legal advice should be taken to verify fixtures/fittings, planning, alterations and/or lease details
- Appliances & services are untested, dimensions are approximate and floor plans are not to scale
- Through a Homewise Home For Life Plan people aged 60+ can secure this property for up to 59% less, by purchasing a Lifetime Lease.



21711131/20230811/PH/MS