



**Guide Price**

**£480,000**

**Freehold**

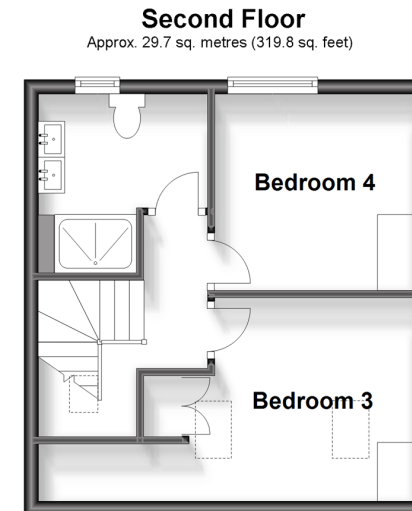
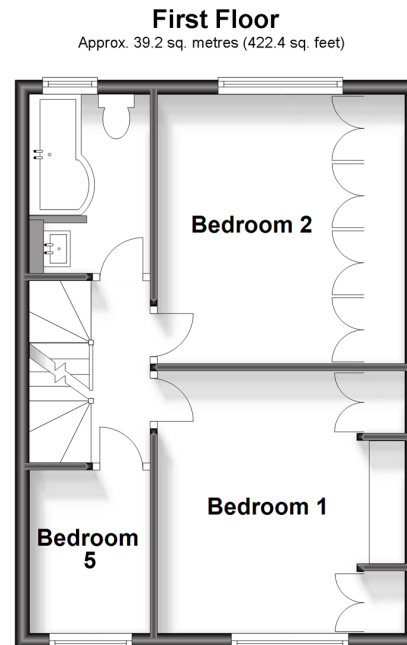
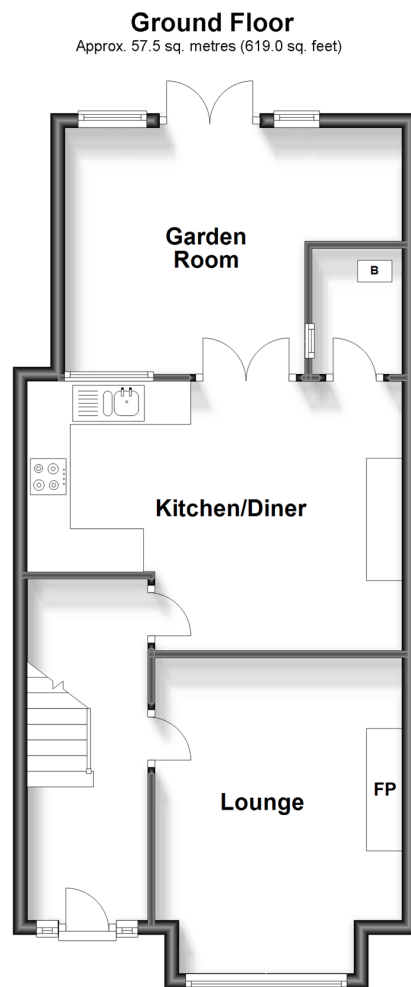
5x  2x  2x 

**Linden Avenue,  
Thornton Heath, Surrey,  
CR7**

**OVER 60?**

Secure this property  
for up to **59% less!**

**cubitt&west**  
Helping you move forwards



## Accommodation

### GROUND FLOOR

Entrance Hall

Lounge: 15'7 x 11'3 (4.75m x 3.43m)

Kitchen/Diner: 17'1 x 15'11 (5.21m x 4.85m)

Utility Room: 6'1 x 4'0 (1.86m x 1.22m)

Garden Room: 13'11 x 11'11 (4.24m x 3.63m)

### FIRST FLOOR

Landing

Bedroom 1: 12'8 x 10'0 up to chimney breast (3.86m x 3.05m)

Bedroom 2: 12'6 x 9'3 up to fitted wardrobes (3.81m x 2.82m)

Bedroom 5: 7'9 x 5'8 (2.36m x 1.73m)

Bathroom

### SECOND FLOOR

Landing

Bedroom 3: 9'7 x 8'7 (2.92m x 2.62m)

Bedroom 4: 8'7 x 8'3 (2.62m x 2.52m)

Shower Room

### OUTSIDE

Off-Road Parking

Rear Garden





## Main features

- Fantastic spacious family home in an ideal location
- Relax in the garden room with friends
- Off-road parking
- Open-plan kitchen/diner
- Bathroom and shower room
- Close to shops, local amenities and great transport links



### Nearest Schools

Primary: Winterbourne Junior Boys' & Girls' School 0.5 miles, Beulah Junior School 0.7 miles

Secondary: Bensham Manor School 0.6 miles, Norbury Manor Business and Enterprise College for Girls 1.2 miles,



### Transport Information

Train Stations: Thornton Heath 0.6 miles, Norbury 1.2 miles, West Croydon 1.4 miles



### Address

Linden Avenue, Thornton Heath, Surrey, CR7



### Directions

For directions to this property please contact us.





**cubitt&west**  
Helping you move forwards

Call Shirley Branch 020 8654 3037 ■ [cubittandwest.co.uk](http://cubittandwest.co.uk)



- A private rental licensing scheme applies to some properties in this area, please contact us before proceeding
- Appliances & services are untested, dimensions are approximate and floor plans are not to scale

- Legal advice should be taken to verify fixtures/fittings, planning, alterations and/or lease details
- Through a Homewise Home For Life Plan people aged 60+ can secure this property for up to 59% less, by purchasing a Lifetime Lease.



21711186/20230922/PH/PH