

OVER 60?

Secure this property
for up to **59% less!**

Price

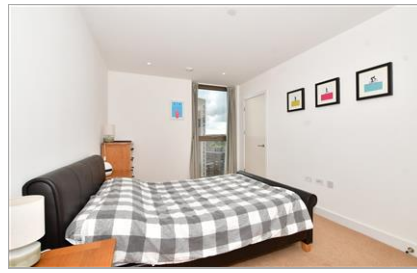
£450,000

Leasehold

2x  2x  1x 

**Vita Apartments,
Caithness Walk,
Croydon, Surrey, CR0**

cubitt&west
Helping you move forwards



Main features

- **Stunning 2 bedroom twentieth floor apartment**
- **Open plan living makes entertaining guests easy**
- **En-suite shower room to bedroom 1**
- **Amazing panoramic views towards London**
- **Situated in the heart of Croydon on the doorstep of shops and transport**

Accommodation

TWENTIETH FLOOR

Entrance Hall

Lounge/Kitchen: 27'4 x 11'4 (8.34m x 3.46m)

Balcony

Bedroom 1: 15'10 x 9'10 (4.83m x 3.00m)

Walk-In Wardrobe: 9'4 x 4'6 (2.85m x 1.37m)

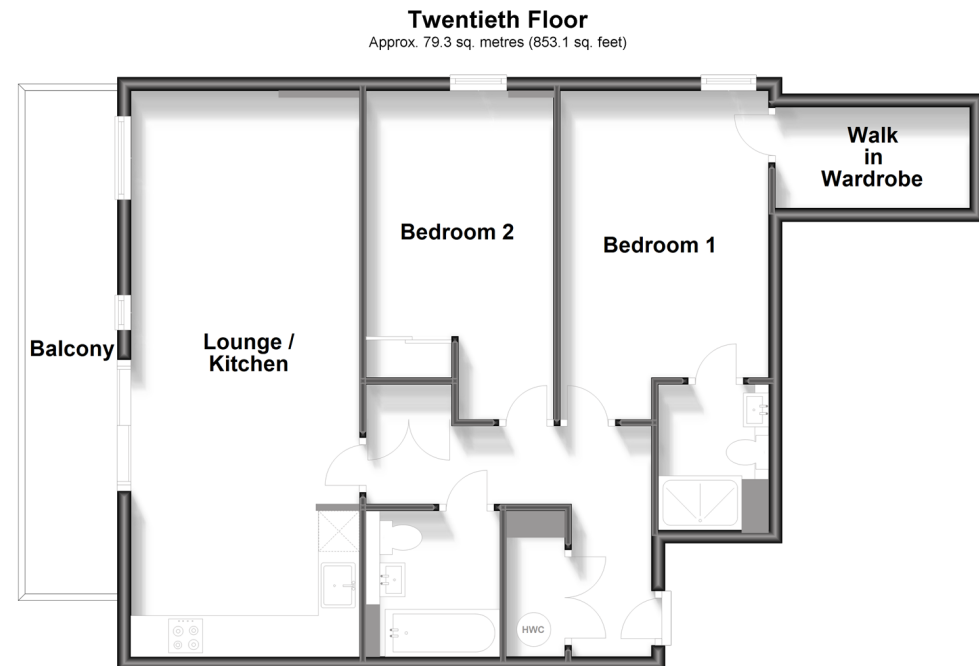
En-Suite Shower Room

Bedroom 2: 15'4 x 9'1 (4.68m x 2.77m)

Bathroom

OUTSIDE

Communal Grounds



Call Shirley - 020 8654 3037 ■ cubittandwest.co.uk

- A private rental licensing scheme applies to some properties in this area, please contact us before proceeding
- Appliances & services are untested, dimensions are approximate and floor plans are not to scale

- Legal advice should be taken to verify fixtures/fittings, planning, alterations and/or lease details
- Through a Homewise Home For Life Plan people aged 60+ can secure this property for up to 59% less, by purchasing a Lifetime Lease.