



OVER 60?

Secure this property
for up to **59% less!**

Price

£525,000

Freehold

3x  1x  2x 

**Grange Park Road,
Thornton Heath, Surrey,
CR7**

cubitt&west
Helping you move forwards



Main features

- Delightful mid-terrace family home
- Extended to the rear to provide useful extra space
- Lounge/diner is ideal for entertaining guests
- Refitted kitchen, upstairs bathroom and downstairs cloakroom
- Off-road parking and private rear garden

Accommodation

GROUND FLOOR

Entrance Porch
 Entrance Hall
 Lounge/Diner: 25'6 x 11'8 (7.78m x 3.56m)
 Kitchen: 15'9 x 7'3 maximum (4.80m x 2.21m)
 Family Area: 8'9 x 8'5 (2.67m x 2.57m)
 Cloakroom

FIRST FLOOR

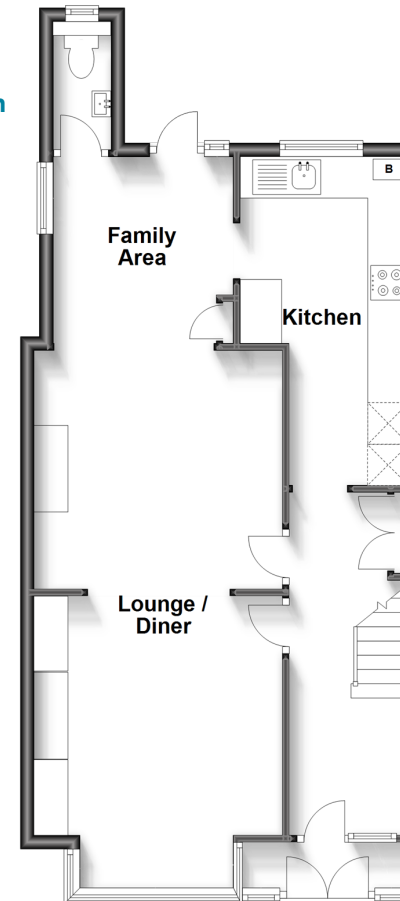
Landing
 Bedroom 1: 13'3 x 11'9 (4.04m x 3.58m)
 Bedroom 2: 12'4 x 11'0 (3.76m x 3.36m)
 Bedroom 3: 8'3 x 5'9 (2.52m x 1.75m)
 Bathroom

OUTSIDE

Off-Road Parking
 Rear Garden

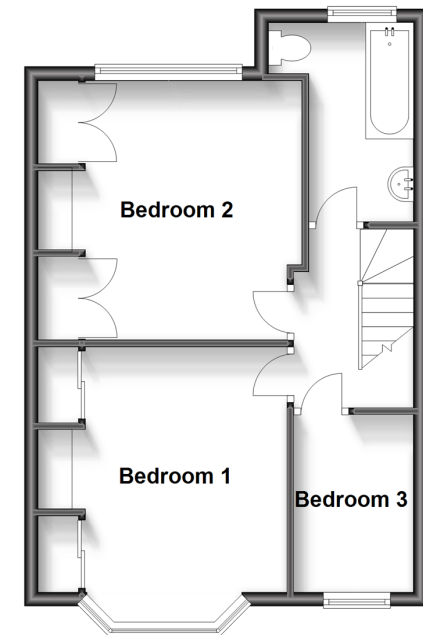
Ground Floor

Approx. 58.4 sq. metres (629.1 sq. feet)



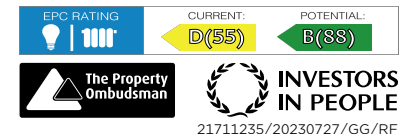
First Floor

Approx. 42.5 sq. metres (457.6 sq. feet)



Call Shirley - 020 8654 3037 ■ cubittandwest.co.uk

- A private rental licensing scheme applies to some properties in this area, please contact us before proceeding
- Legal advice should be taken to verify fixtures/fittings, planning, alterations and/or lease details
- Appliances & services are untested, dimensions are approximate and floor plans are not to scale
- Through a Homewise Home For Life Plan people aged 60+ can secure this property for up to 59% less, by purchasing a Lifetime Lease.



21711235/20230727/GG/RF