



Guide Price
£450,000

Freehold

3x  1x  2x 

**Winterbourne Road,
Thornton Heath, Surrey,
CR7**

cubitt&west
Helping you move forwards



Main features

- Mid-terrace house in an ideal location
- Spacious kitchen will ensure that cooking meals is a breeze
- Downstairs bathroom
- Relax in the rear garden when the weather is warm
- Situated close to local amenities and transport links

Accommodation

GROUND FLOOR

Entrance Hall

Lounge: 12'8 x 9'9 (3.86m x 2.97m)

Dining Area: 10'4 x 9'2 (3.15m x 2.80m)

Kitchen: 14'1 x 13'2 (4.30m x 4.02m)

Bathroom

FIRST FLOOR

Landing

Bedroom 1: 14'8 x 10'4 (4.47m x 3.15m)

Bedroom 2: 10'6 x 9'1 (3.20m x 2.77m)

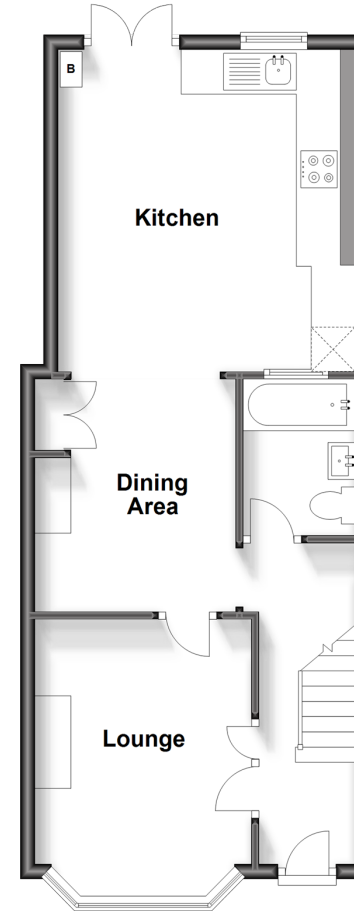
Bedroom 3: 7'11 x 6'11 (2.41m x 2.11m)

OUTSIDE

Rear Garden

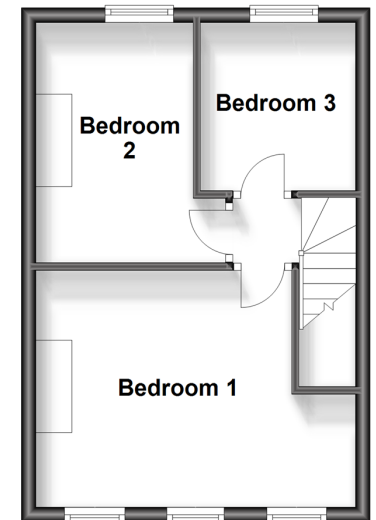
Ground Floor

Approx. 46.7 sq. metres (502.6 sq. feet)



First Floor

Approx. 28.9 sq. metres (311.3 sq. feet)



Call Shirley - 020 8654 3037 ■ cubittandwest.co.uk

- A private rental licensing scheme applies to some properties in this area, please contact us before proceeding
- Legal advice should be taken to verify fixtures/fittings, planning, alterations and/or lease details
- Appliances & services are untested, dimensions are approximate and floor plans are not to scale



21711285/20230829/GG/PH