



**Price**

**£180,000**

**Leasehold**

1x  1x  0x 

**St. Christopher's  
Gardens, Thornton  
Heath, Surrey, CR7**

**OVER 60?**

Secure this property  
for up to **59% less!**

**cubitt&west**  
Helping you move forwards





## Main features

- **Fantastic second floor studio apartment**
- **Refitted kitchen and shower room**
- **Ample storage both inside and outside**
- **Allocated parking for 2 cars**
- **Communal grounds**
- **Excellent location for transport links as well as local shops and eateries**

## Accommodation

### SECOND FLOOR

Entrance Hall

Studio: 15'7 x 15'5 into bay (4.75m x 4.70m)

Kitchen: 7'8 x 7'5 (2.34m x 2.26m)

Shower Room

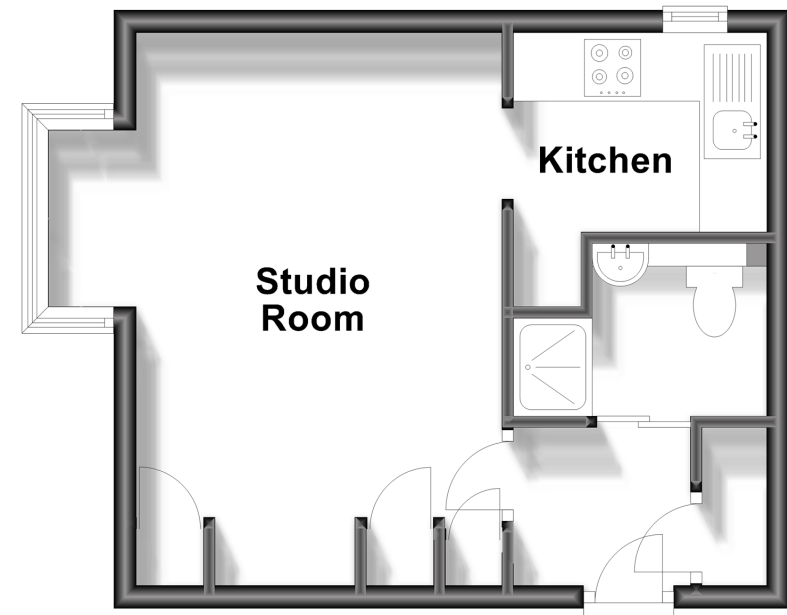
### OUTSIDE

Allocated Parking

Communal Gardens

## Second Floor

Approx. 28.4 sq. metres (305.4 sq. feet)



**Call Shirley - 020 8654 3037 ■ [cubittandwest.co.uk](http://cubittandwest.co.uk)**

- A private rental licensing scheme applies to some properties in this area, please contact us before proceeding
- Appliances & services are untested, dimensions are approximate and floor plans are not to scale

- Legal advice should be taken to verify fixtures/fittings, planning, alterations and/or lease details
- Through a Homewise Home For Life Plan people aged 60+ can secure this property for up to 59% less, by purchasing a Lifetime Lease.

