



OVER 60?

Secure this property
for up to **59% less!**

Price

£525,000

Freehold

3x  1x  2x 

**Elm Park Road, South
Norwood, SE25**

cubitt&west
Helping you move forwards



Main features

- Delightful home in a popular residential location
- Spacious lounge and dining room make entertaining easy
- Beautiful front and rear gardens
- Driveway and garage to the side
- Situated close to transport and all local amenities

Accommodation

GROUND FLOOR

Entrance Hall

Lounge: 15'11 x 12'0 (4.85m x 3.66m)

Dining Room: 14'1 x 11'0 (4.30m x 3.36m)

Kitchen: 9'8 x 7'4 (2.95m x 2.24m)

FIRST FLOOR

Landing

Bedroom 1: 15'0 x 11'5 (4.58m x 3.48m)

Bedroom 2: 14'0 x 11'9 (4.27m x 3.58m)

Bedroom 3: 9'6 x 6'5 (2.90m x 1.96m)

Bathroom

OUTSIDE

Driveway

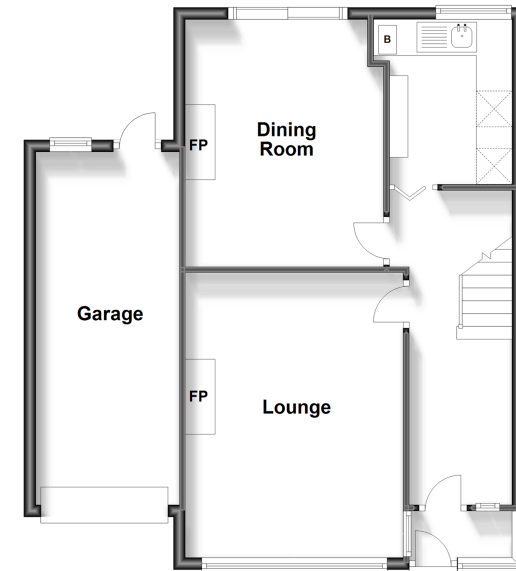
Front Garden

Garage

Rear Garden

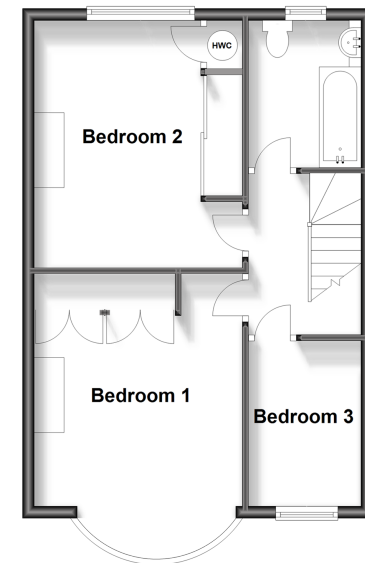
Ground Floor

Approx. 63.8 sq. metres (687.2 sq. feet)



First Floor

Approx. 44.8 sq. metres (482.8 sq. feet)



Call Shirley - 020 8654 3037 ■ cubittandwest.co.uk

- A private rental licensing scheme applies to some properties in this area, please contact us before proceeding
- Legal advice should be taken to verify fixtures/fittings, planning, alterations and/or lease details
- Appliances & services are untested, dimensions are approximate and floor plans are not to scale
- Through a Homewise Home For Life Plan people aged 60+ can secure this property for up to 59% less, by purchasing a Lifetime Lease.



21711340/20231103/GG/RF