



**Price**

**£400,000**

**Freehold**

2x  1x  1x 

**Longford Court,  
Wickham Road, Shirley,  
Croydon, Surrey, CR0**

**cubitt&west**  
Helping you move forwards

## Accommodation

### FIRST FLOOR

Entrance Hall

Kitchen/Lounge/Diner: 20'10 x 18'10 (6.35m x 5.74m) narrowing to 13'5 x 10'0 (4.09m x 3.05m)

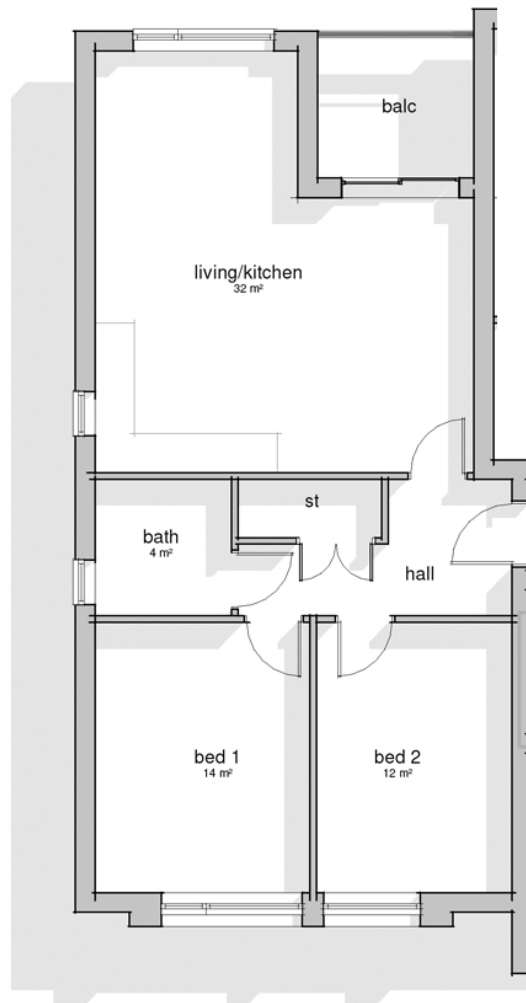
Bedroom 1: 13'4 x 10'10 (4.07m x 3.30m)

Bedroom 2: 13'4 x 9'6 (4.07m x 2.90m)

Bathroom

### OUTSIDE

Balcony



LONGFORD COURT  
PLOT 6 FIRST FLOOR





## Main features

- Contemporary high gloss grey kitchen with white quartz worktops and branded integrated appliances
- Spacious living area with private balcony and vintage grey timber flooring
- Generous carpeted bedrooms
- Beautifully appointed white Tivoli bathroom suite with chrome fittings



### Nearest Schools

Primary: St John's CofE 0.1 miles, Benson Primary and Nursery School 0.3 miles, Orchard Way 0.8 miles

Secondary: Coloma Convent Girls' School 0.3 miles, Trinity School 0.3 miles



### Transport Information

Train Stations: Eden Park 1.5 miles, West Wickham 1.7 miles, East Croydon 1.7 miles



### Address

Longford Court, Wickham Road, Shirley, Croydon, Surrey, CR0



### Directions

For directions to this property please contact us.





**cubitt&west**  
Helping you move forwards

Call Shirley Branch 020 8654 3037 ■ [cubittandwest.co.uk](https://cubittandwest.co.uk)



■ A private rental licensing scheme applies to some properties in this area, please contact us before proceeding  
■ Appliances & services are untested, dimensions are approximate and floor plans are not to scale

■ Legal advice should be taken to verify fixtures/fittings, planning, alterations and/or lease details



21711387/20240216/BF/RF