



Price

£325,000

Leasehold

2x  1x  1x 

**Acer Road, Biggin Hill,
Westerham, Kent, TN16**

OVER 60?

Secure this property
for up to **59% less!**

cubitt&west
Helping you move forwards



Main features

- **Fantastic ground floor maisonette in a quiet location**
- **Ideal first-time or investment purchase**
- **Cook delicious meals with ease in the modern fitted kitchen**
- **Storage space for your extra belongings**
- **Direct access to private rear garden**

Accommodation

GROUND FLOOR

Entrance Hall

Lounge: 17'2 x 11'3 (5.24m x 3.43m)

Kitchen: 11'1 x 10'6 (3.38m x 3.20m)

Bedroom 1: 15'1 x 10'0 (4.60m x 3.05m)

Bedroom 2: 12'0 x 8'7 (3.66m x 2.62m)

Bathroom

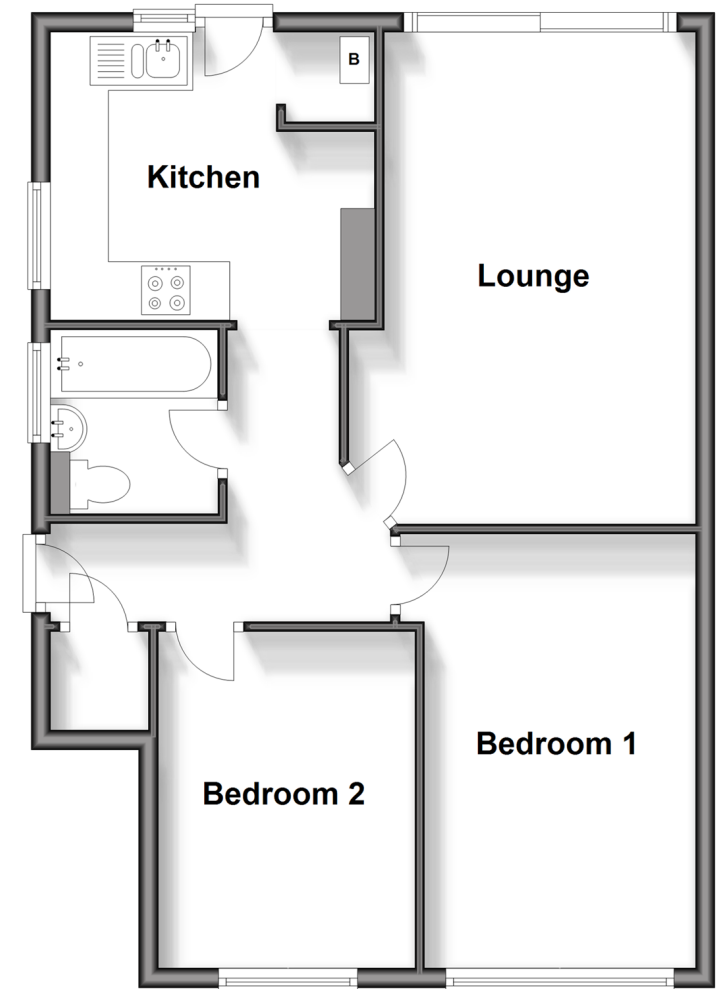
OUTSIDE

Garage

Rear Garden

Ground Floor

Approx. 61.2 sq. metres (658.2 sq. feet)



Call Shirley - 020 8654 3037 ■ cubittandwest.co.uk

- A private rental licensing scheme applies to some properties in this area, please contact us before proceeding
- Legal advice should be taken to verify fixtures/fittings, planning, alterations and/or lease details
- Appliances & services are untested, dimensions are approximate and floor plans are not to scale
- Through a Homewise Home For Life Plan people aged 60+ can secure this property for up to 59% less, by purchasing a Lifetime Lease.

