



Guide Price
£595,000

Freehold

3x  1x  1x 

**Bridle Road, Shirley,
Croydon, Surrey, CR0**

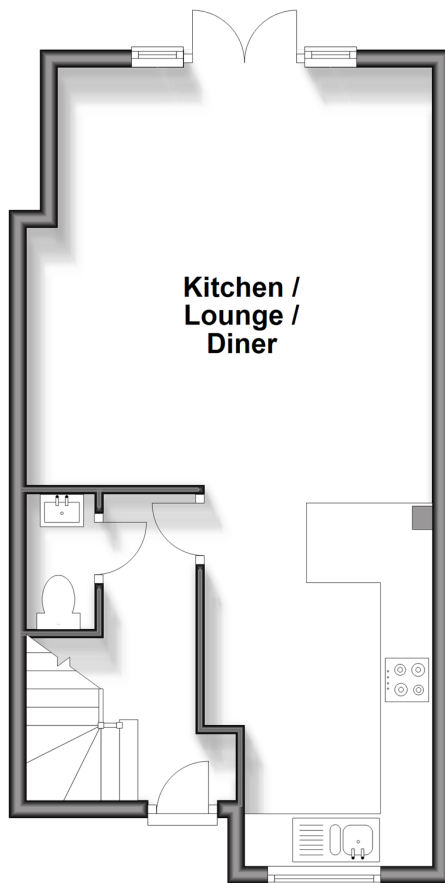
OVER 60?

Secure this property
for up to **59% less!**

cubitt&west
Helping you move forwards

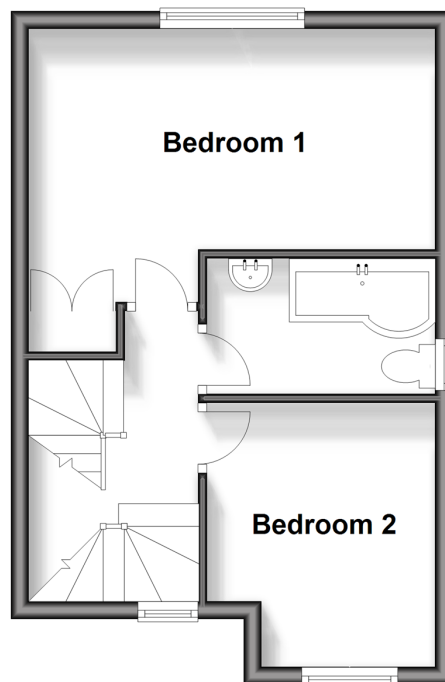
Ground Floor

Approx. 40.2 sq. metres (432.8 sq. feet)



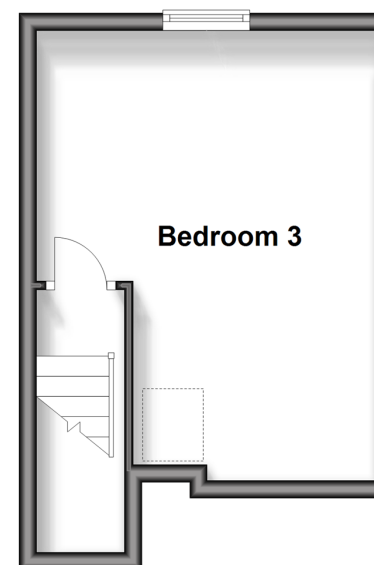
First Floor

Approx. 32.3 sq. metres (347.7 sq. feet)



Second Floor

Approx. 20.7 sq. metres (223.2 sq. feet)



Accommodation

GROUND FLOOR

Entrance Hallway

Cloakroom

Lounge/Diner: 15'4 x 15'2 (4.68m x 4.63m)

Kitchen: 13'5 x 8'4 (4.09m x 2.54m)

FIRST FLOOR

Landing

Bedroom 1: 15'2 (4.63m) x 10'3 (3.13m) narrowing to 8'2 (2.49m)

Bedroom 2: 9'10 x 8'8 (3.00m x 2.64m)

Family Bathroom: 8'7 x 4'11 (2.62m x 1.50m)

SECOND FLOOR

Bedroom 3: 16'10 maximum x 12'8 maximum (5.13m x 3.86m)

OUTSIDE

Front and Rear Garden



Main features

- Stunning end of terrace house
- Built in 2021 so in a great condition
- Bright open plan kitchen, lounge and diner to relax and entertain in
- Spacious front and rear garden
- Location close to transport links, amenities and shops



Nearest Schools

Primary Schools: Spring Park Primary 0.1 miles
Benson Primary and Nursery School 0.5 miles
Secondary Schools: Beckmead School 0.6 miles



Transport Information

Train Stations: West Wickham 1.0 miles
Eden Park 1.4 miles, Hayes 1.8 miles



Address

Bridle Road, Shirley, Croydon, Surrey, CR0



Directions

For directions to this property please contact us.



cubitt&west
Helping you move forwards

Call Shirley Branch 020 8654 3037 ■ [cubittandwest.co.uk](https://www.cubittandwest.co.uk)



- A private rental licensing scheme applies to some properties in this area, please contact us before proceeding
- Appliances & services are untested, dimensions are approximate and floor plans are not to scale

- Legal advice should be taken to verify fixtures/fittings, planning, alterations and/or lease details
- Through a Homewise Home For Life Plan people aged 60+ can secure this property for up to 59% less, by purchasing a Lifetime Lease.



21711396/20240419/BF/PH