



Guide Price
£500,000

Freehold

4x  1x  2x 

**Verdayne Avenue,
Shirley, Croydon,
Surrey, CR0**

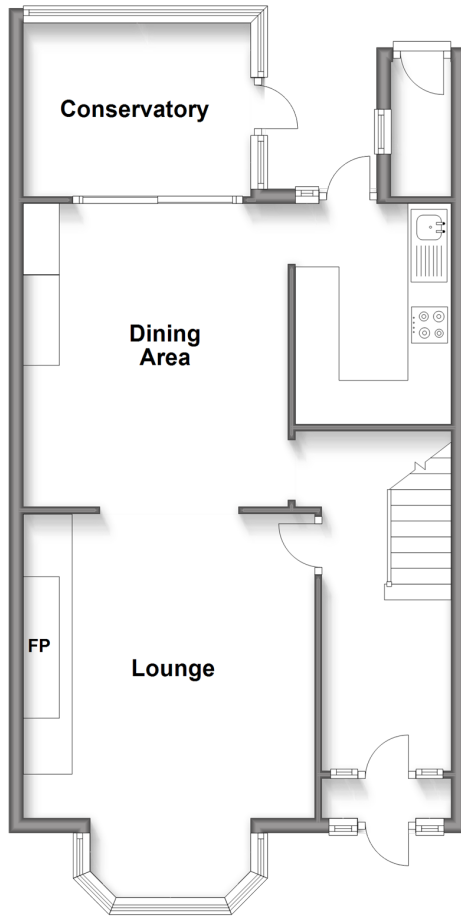
OVER 60?

Secure this property
for up to **59% less!**

cubitt&west
Helping you move forwards

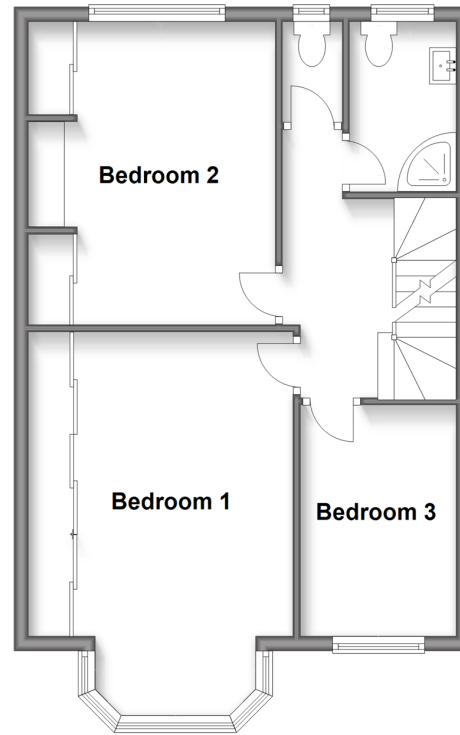
Ground Floor

Approx. 61.6 sq. metres (662.6 sq. feet)



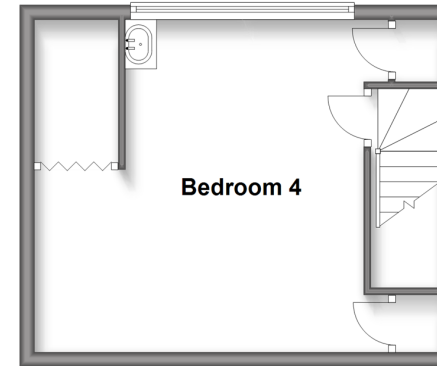
First Floor

Approx. 52.5 sq. metres (565.5 sq. feet)



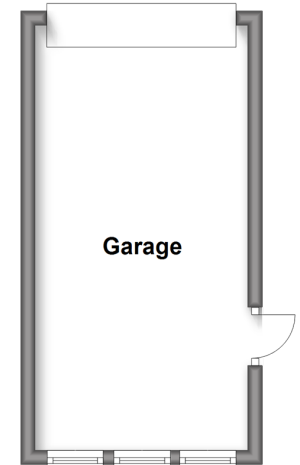
Second Floor

Approx. 25.9 sq. metres (278.4 sq. feet)



Outbuilding

Approx. 17.3 sq. metres (185.8 sq. feet)



Accommodation

GROUND FLOOR

Entrance Hall

Lounge: 17'2 x 13'0 (5.24m x 3.97m)

Dining Room: 14'2 x 12'0 (4.32m x 3.66m)

Kitchen: 10'11 x 6'9 (3.33m x 2.06m)

FIRST FLOOR

Landing

Bedroom 1: 17'3 x 12'1 (5.26m x 3.69m)

Bedroom 2: 14'1 x 10'1 (4.30m x 3.08m)

Bedroom 3: 10'3 x 7'1 (3.13m x 2.16m)

Bathroom

SECOND FLOOR

Bedroom 4: 17'2 x 15'4 (5.24m x 4.68m)

OUTSIDE

Garage To Rear

Front Garden

Rear Garden



Main features

- Splendid mid-terrace house in a perfect location
- Buses (including Superloop) at the end of the road
- Shops and reputable schools all within very close proximity
- Bonus bedroom 4 in the loft
- Garage to the rear



Nearest Schools

Primary: St John's CofE 0.2 miles, Benson Primary and Nursery School 0.4 miles, Orchard Way Primary 0.6 miles

Secondary: Trinity School 0.4 miles, Coloma Convent Girls' School 0.5 miles



Transport Information

Train Stations: Eden Park 1.3 miles, West Wickham 1.5 miles, Elmers End 1.6 miles



Address

Verdayne Avenue, Shirley, Croydon, Surrey, CR0



Directions

For directions to this property please contact us.



cubitt&west
Helping you move forwards

Call Shirley Branch 020 8654 3037 ■ cubittandwest.co.uk



- A private rental licensing scheme applies to some properties in this area, please contact us before proceeding
- Appliances & services are untested, dimensions are approximate and floor plans are not to scale

- Legal advice should be taken to verify fixtures/fittings, planning, alterations and/or lease details
- Through a Homewise Home For Life Plan people aged 60+ can secure this property for up to 59% less, by purchasing a Lifetime Lease.



21711420/20240325/CB/CB