



OVER 60?

Secure this property
for up to **59% less!**

Price
£575,000

Freehold

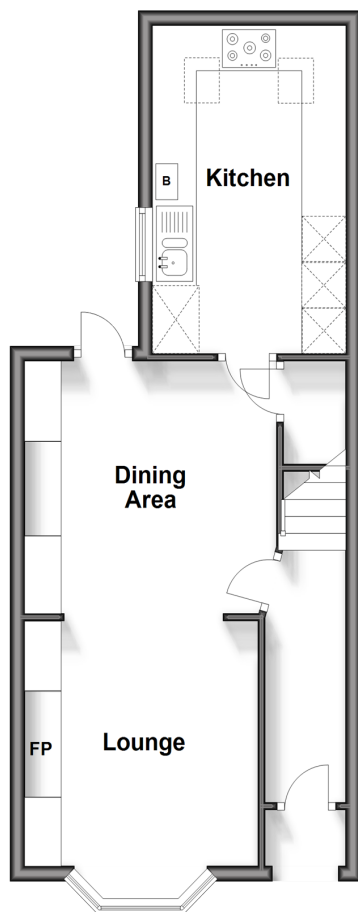
4x  2x  2x 

**Coniston Road,
Croydon, Surrey, CR0**

cubitt&west
Helping you move forwards

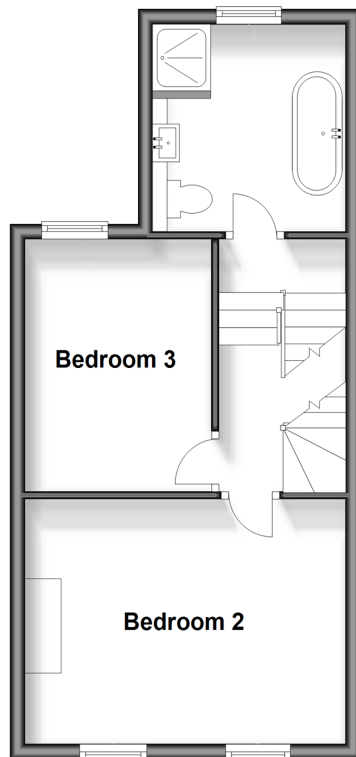
Ground Floor

Approx. 40.5 sq. metres (435.9 sq. feet)



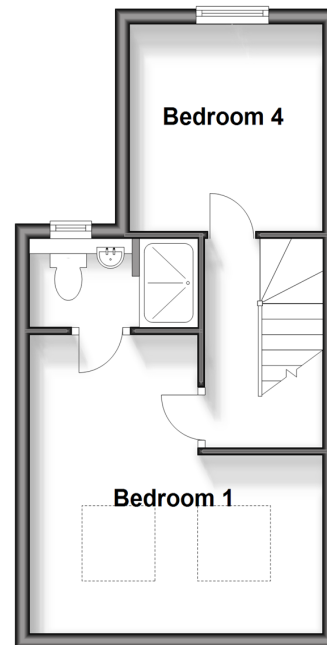
Split Level First Floor

Approx. 37.0 sq. metres (398.8 sq. feet)



Second Floor

Approx. 28.6 sq. metres (308.3 sq. feet)



Outbuilding

Approx. 11.2 sq. metres (120.5 sq. feet)



Room 1

(seller uses as an office/family room)

Accommodation

GROUND FLOOR

Entrance Hallway

Lounge : 12'6 x 10'6 (3.81m x 3.20m)

Dining Area: 11'2 x 11'1 (3.41m x 3.38m)

Kitchen: 14'3 x 8'9 (4.35m x 2.67m)

SPLIT LEVEL FIRST FLOOR

Landing

Bedroom 2: 14'1 x 10'9 (4.30m x 3.28m)

Bedroom 3: 11'2 x 8'5 (3.41m x 2.57m)

Family Bathroom

SECOND FLOOR

Landing

Bedroom 1: 13'0 maximum x 12'9 maximum (3.97m x 3.89m)

En suite Shower Room

Bedroom 4: 9'3 x 8'5 (2.82m x 2.57m)

OUTSIDE

Front and Rear Garden

Outbuilding : 11'1 x 10'8 (3.38m x 3.25m)



Main features

- Stunning mid-terrace family house
- Beautifully appointed kitchen
- Spacious lounge and dining area
- Low maintenance garden, with a outbuilding equipped with electrics and heating
- Residential location with excellent amenities, transport links and schools



Nearest Schools

Primary Schools: Woodside Junior School 0.3 miles
St Thomas Becket Catholic Primary 0.6 miles
Secondary Schools: Oasis Shirley Park Academy 0.5 miles
Ark Blake Academy 0.7 miles



Transport Information

Train Stations: West Croydon 1.3 miles
East Croydon 1.4 miles, Elmers End 1.4 miles
Tram Stops: Blackhorse Lane 0.05 miles
Addiscombe 0.3 miles



Address

Coniston Road, Croydon, Surrey, CR0



Directions

For directions to this property please contact us.



cubitt&west
Helping you move forwards

Call Shirley Branch 020 8654 3037 ■ cubittandwest.co.uk



- A private rental licensing scheme applies to some properties in this area, please contact us before proceeding
- Appliances & services are untested, dimensions are approximate and floor plans are not to scale

- Legal advice should be taken to verify fixtures/fittings, planning, alterations and/or lease details
- Through a Homewise Home For Life Plan people aged 60+ can secure this property for up to 59% less, by purchasing a Lifetime Lease.



21711455/20240425/RF/RF