



Guide Price
£375,000

Freehold

2x  1x  1x 

**Canterbury Road,
Croydon, Surrey, CR0**

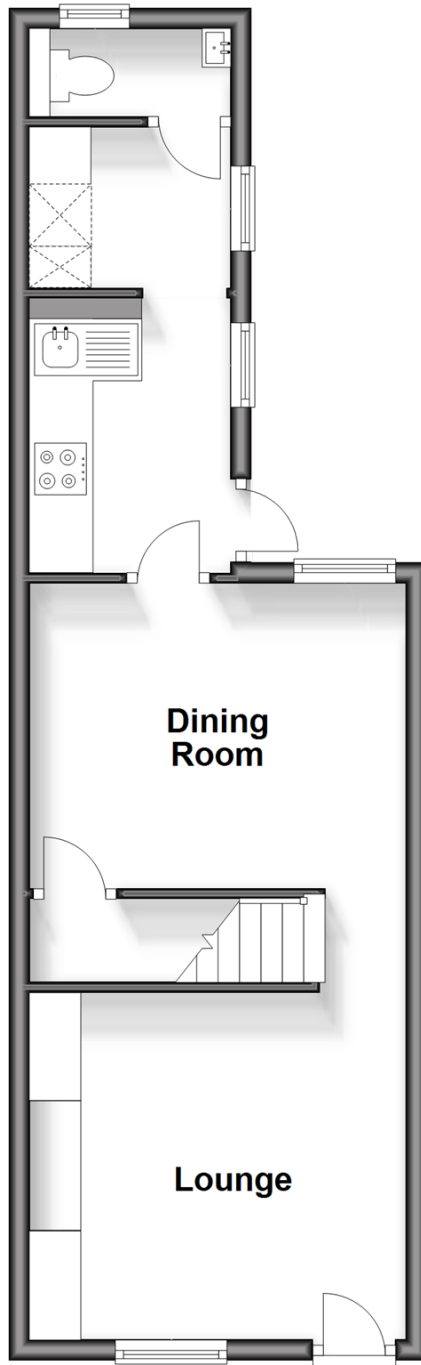
OVER 60?

Secure this property
for up to **59% less!**

cubitt&west
Helping you move forwards

Ground Floor

Approx. 37.1 sq. metres (399.2 sq. feet)



First Floor

Approx. 32.0 sq. metres (344.6 sq. feet)



Accommodation

GROUND FLOOR

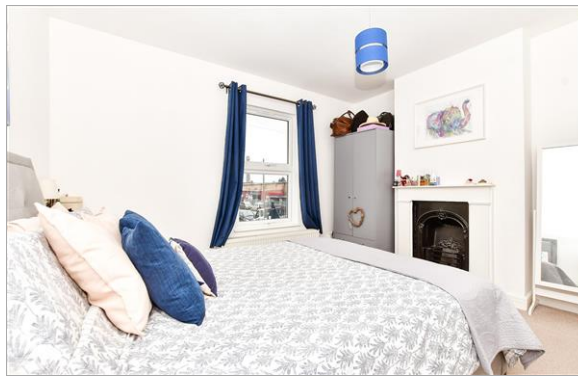
Lounge: 12'0 x 9'4 (3.66m x 2.85m)
Dining Room: 12'0 x 11'0 (3.66m x 3.36m)
Kitchen: 7'11 x 6'2 (2.41m x 1.88m)
Utility Area: 6'0 x 5'1 (1.83m x 1.55m)
Cloakroom

FIRST FLOOR

Landing
Bedroom 1: 12'0 x 11'0 (3.66m x 3.36m)
Bedroom 2: 9'5 x 9'4 (2.87m x 2.85m)
Family Bathroom

OUTSIDE

Front Garden
Rear Garden



Main features

- Delightful period house
- Beautifully presented throughout
- Large landscaped rear garden
- Downstairs cloakroom and utility area, upstairs bathroom
- Great location close to Croydon town centre and a short bus ride to East Croydon Station



Nearest Schools

Primary Schools: West Thornton Primary 0.2 miles, Kingsley Primary 0.3 miles, Elmwood Junior School 0.5 miles
Secondary Schools: The Archbishop Lanfranc School 0.6 miles, ALTE School 0.8 miles



Transport Information

Train Stations: West Croydon 0.8 miles, Waddon 1.0 miles, Thornton Heath 1.1 miles



Address

Canterbury Road, Croydon, Surrey, CR0



Directions

For directions to this property please contact us.



cubitt&west
Helping you move forwards

Call Shirley Branch 020 8654 3037 ■ cubittandwest.co.uk



- A private rental licensing scheme applies to some properties in this area, please contact us before proceeding
- Appliances & services are untested, dimensions are approximate and floor plans are not to scale

- Legal advice should be taken to verify fixtures/fittings, planning, alterations and/or lease details
- Through a Homewise Home For Life Plan people aged 60+ can secure this property for up to 59% less, by purchasing a Lifetime Lease.



21711485/20240511/BF/RF