



**Guide Price**  
**£375,000**

**Freehold**

3x  1x  2x 

**Thursley Crescent, New  
Addington, Croydon,  
Surrey, CR0**

**OVER 60?**

Secure this property  
for up to **59% less!**

**cubitt&west**  
Helping you move forwards





## Main features

- Delightful mid terrace house
- Move straight in as the house has been refurbished throughout
- Spacious lounge, kitchen with dining area
- Upstairs bathroom with a separate toilet
- Front and rear gardens

## Accommodation

### GROUND FLOOR

Entrance Hall

Lounge: 18'11 (5.77m) x 11'4 (3.46m) narrowing to 9'10 (3.00m)

Dining Area: 9'6 x 7'10 (2.90m x 2.39m)

Kitchen: 12'6 x 9'0 (3.81m x 2.75m)

### FIRST FLOOR

Bedroom 1: 11'8 x 11'5 (3.56m x 3.48m)

Bedroom 2: 12'5 (3.79m) x 11'1 maximum (3.38m) narrowing to 7'10 minimum (2.39m)

Bedroom 3: 8'6 x 7'0 (2.59m x 2.14m)

Family Bathroom

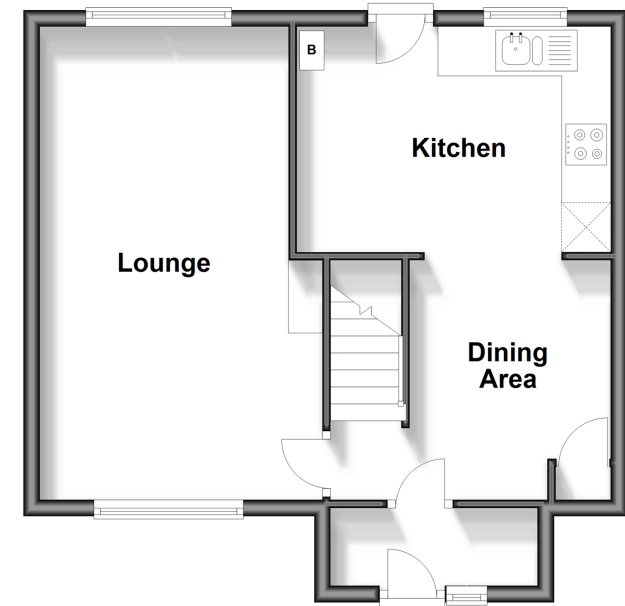
### OUTSIDE

Front Garden

Rear Garden

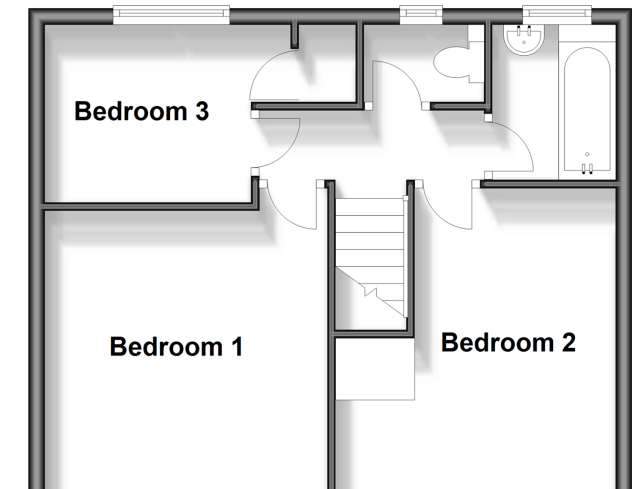
## Ground Floor

Approx. 43.1 sq. metres (463.5 sq. feet)



## First Floor

Approx. 40.4 sq. metres (434.8 sq. feet)



**Call Shirley - 020 8654 3037 ■ [cubittandwest.co.uk](http://cubittandwest.co.uk)**

- A private rental licensing scheme applies to some properties in this area, please contact us before proceeding
- Legal advice should be taken to verify fixtures/fittings, planning, alterations and/or lease details
- Appliances & services are untested, dimensions are approximate and floor plans are not to scale
- Through a Homewise Home For Life Plan people aged 60+ can secure this property for up to 59% less, by purchasing a Lifetime Lease.



21711519/20240418/BF/RF