



Price
£525,000

Freehold

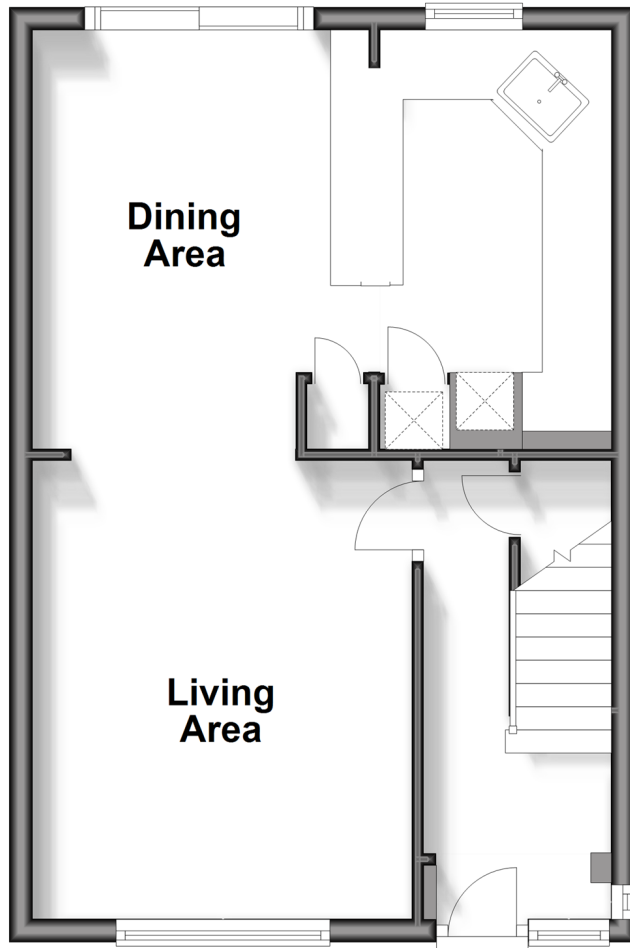
3x  1x  2x 

**Fairford Avenue,
Shirley, Croydon,
Surrey, CR0**

cubitt&west
Helping you move forwards

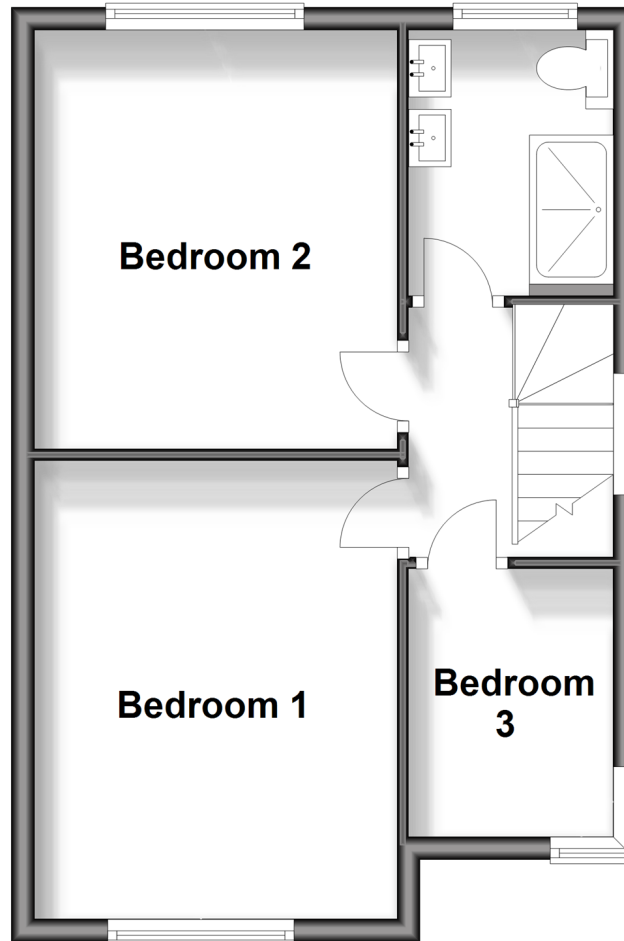
Ground Floor

Approx. 39.5 sq. metres (425.2 sq. feet)



First Floor

Approx. 37.8 sq. metres (407.0 sq. feet)



Accommodation

GROUND FLOOR

Entrance Hall

Living Area: 13'0 x 10'1 (3.97m x 3.08m)

Dining Area: 12'5 x 9'9 (3.79m x 2.97m)

Kitchen: 16'1 x 11'6 (4.91m x 3.51m)

FIRST FLOOR

Landing

Bedroom 1: 13'7 x 10'5 (4.14m x 3.18m)

Bedroom 2: 11'1 x 10'5 (3.38m x 3.18m)

Bedroom 3: 7'1 x 6'6 (2.16m x 1.98m)

Bathroom

OUTSIDE

Front Garden

Rear Garden

Garage

Off-Street Parking



Main features

- Stunning semi-detached house
- Spacious living/dining area and kitchen, perfect for entertaining
- Benefits from a garage and off-street parking
- Private enclosed rear garden
- Excellent amenities and transport links



Nearest Schools

Primary Schools: Monks Orchard School 0.0 miles
Marian Vian Primary 0.3 miles
Orchard Way Primary 0.5 miles

Secondary Schools: Edenham High School 0.5 miles



Transport Information

Train Stations: Elmers End 0.6 miles, Eden Park 0.8 miles
Birkbeck 1.0 miles



Address

Fairford Avenue, Shirley, Croydon, Surrey, CR0



Directions

For directions to this property please contact us.



cubitt&west
Helping you move forwards

Call Shirley Branch 020 8654 3037 ■ [cubittandwest.co.uk](https://www.cubittandwest.co.uk)



- A private rental licensing scheme applies to some properties in this area, please contact us before proceeding
- Appliances & services are untested, dimensions are approximate and floor plans are not to scale

- Legal advice should be taken to verify fixtures/fittings, planning, alterations and/or lease details



21711532/20240419/BF/PH