



Price
£600,000

Freehold

4x  1x  1x 

**Addington Village Road,
Croydon, Surrey, CR0**

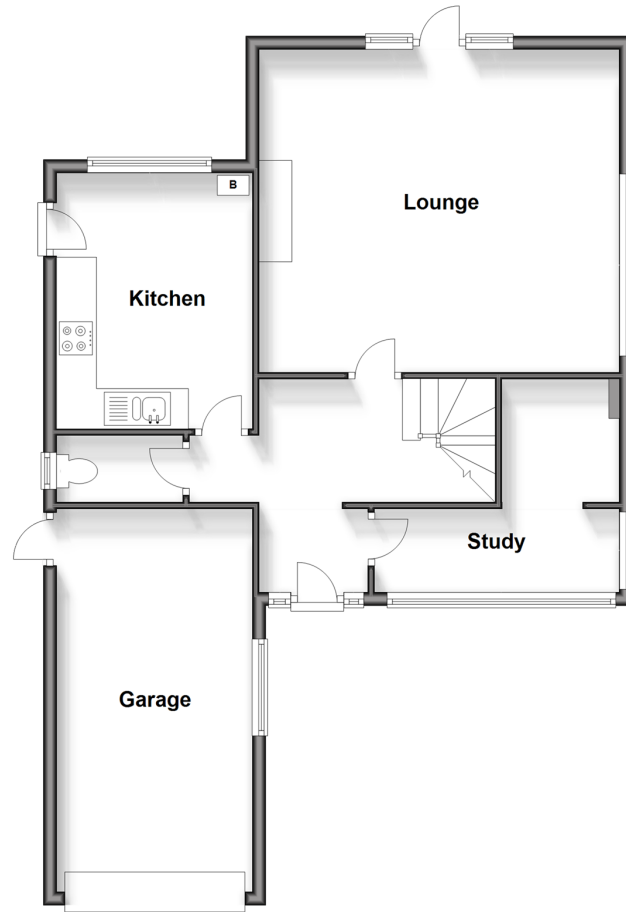
OVER 60?

Secure this property
for up to **59% less!**

cubitt&west
Helping you move forwards

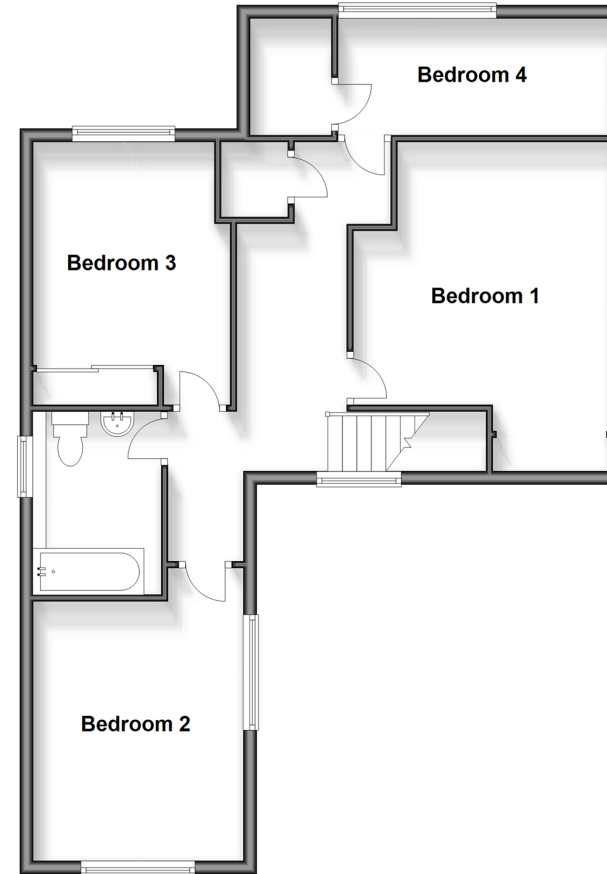
Ground Floor

Approx. 76.9 sq. metres (827.3 sq. feet)



First Floor

Approx. 71.9 sq. metres (774.2 sq. feet)



Accommodation

GROUND FLOOR

Entrance Hallway

Lounge : 18'8 x 16'6 (5.69m x 5.03m)

Study: 12'2 maximum x 11'7 maximum (3.71m x 3.53m)

Kitchen: 13'7 x 9'9 (4.14m x 2.97m)

Separate Toilet

FIRST FLOOR

Landing

Bedroom 1: 15'8 into fitted wardrobes x 13'3 maximum (4.78m x 4.04m)

Bedroom 2: 13'3 x 10'5 (4.04m x 3.18m)

Bedroom 3: 12'8 into fitted wardrobes x 9'10 (3.86m x 3.00m)

Bedroom 4: 13'5 x 6'3 (4.09m x 1.91m)

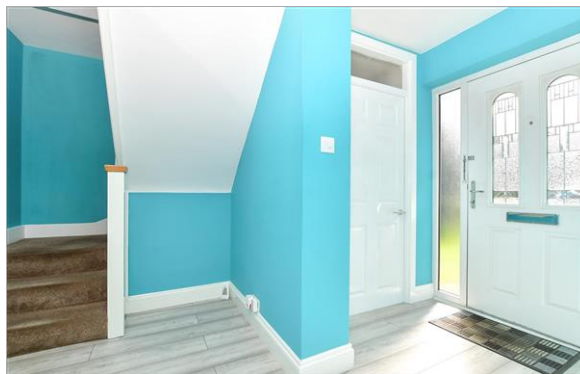
Family Bathroom: 8'9 x 7'2 (2.67m x 2.19m)

OUTSIDE

Front and Rear Garden

Garage

Driveway



Main features

- Spacious detached house
- Beautiful sun trap garden with a pond
- Driveway & private garage
- Residential location with excellent amenities, transport links and schools
- No onward chain



Nearest Schools

Primary Schools: Good Shepherd Catholic Primary 0.5 miles, Castle Hill Primary 0.6 miles
Royal Russell School 1.4 miles
Secondary Schools: Coloma Convent Girls School 1.2 miles, Trinity School 1.6 miles



Transport Information

Train Stations: West Wickham 1.7 miles, Hayes 2.1 miles, Eden Park 2.2 miles
Tram stops: Addington Village 0.4 miles
Gravel Hill 0.8 miles



Address

Addington Village Road, Croydon, Surrey, CR0



Directions

For directions to this property please contact us.



cubitt&west
Helping you move forwards

Call Shirley Branch 020 8654 3037 ■ cubittandwest.co.uk



- A private rental licensing scheme applies to some properties in this area, please contact us before proceeding
- Appliances & services are untested, dimensions are approximate and floor plans are not to scale

- Legal advice should be taken to verify fixtures/fittings, planning, alterations and/or lease details
- Through a Homewise Home For Life Plan people aged 60+ can secure this property for up to 59% less, by purchasing a Lifetime Lease.



21711542/20240422/BF/PH