



OVER 60?

Secure this property
for up to **59% less!**

Price

£195,000

Leasehold

1x  1x  1x 

**Windsor Close,
Southwater, West
Sussex, RH13**

cubitt&west
Helping you move forwards



Main features

- **Spacious maisonette benefiting private entrance**
- **999 year lease granted in 1986 so 962 years left**
- **Located on the top floor so offers great loft storage**
- **Situated in a quiet close just a short walk from the stunning country park and village amenities**
- **Private allocated parking space to the rear of the property and easy on street parking**

Accommodation

FIRST FLOOR

Entrance Hall

Lounge : 11'7 x 11'6 (3.53m x 3.51m)

Kitchen : 11'6 x 6'10 (3.51m x 2.08m)

Bedroom 1: 14'8 x 9'9 (4.47m x 2.97m)

Bathroom : 7'1 x 5'8 (2.16m x 1.73m)

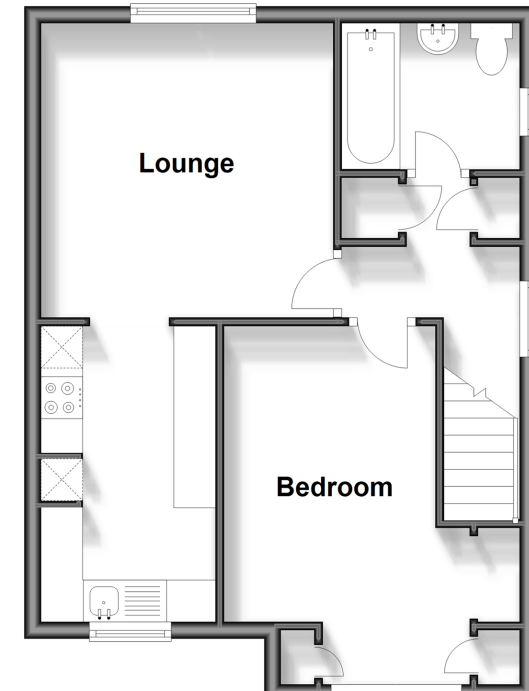
OUTSIDE

Front Garden

Allocated Parking Space

First Floor

Approx. 43.2 sq. metres (465.0 sq. feet)



Call Southwater - 01403 731901 ■ cubittandwest.co.uk

■ Legal advice should be taken to verify fixtures/fittings, planning, alterations and/or lease details
 ■ Through a Homewise Home For Life Plan people aged 60+ can secure this property for up to 59% less, by purchasing a Lifetime Lease.

■ Appliances & services are untested, dimensions are approximate and floor plans are not to scale