



OVER 60?

Secure this property
for up to **59% less!**

Price

£335,000

Freehold

2x  1x  2x 

**Dover Close,
Southwater, Nr
Horsham, West Sussex,
RH13**

cubitt&west
Helping you move forwards



Main features

- **Lovely and well presented property ideal for first time buyers**
- **Situated in a popular close**
- **Driveway offering off road parking for one car and single garage**
- **Pretty rear garden accessed via the kitchen with side gated access**
- **Located close to Southwater village amenities and stunning country park**

Accommodation

Entrance Hall

GROUND FLOOR

Lounge : 14'6 x 10'10 (4.42m x 3.30m)

Kitchen : 10'10 x 7'9 (3.30m x 2.36m)

FIRST FLOOR

Landing

Bedroom 1: 11'2 x 7'9 (3.41m x 2.36m)

Bedroom 2: 8'0 x 6'0 (2.44m x 1.83m)

Bathroom : 16'9 x 8'2 (5.11m x 2.49m)

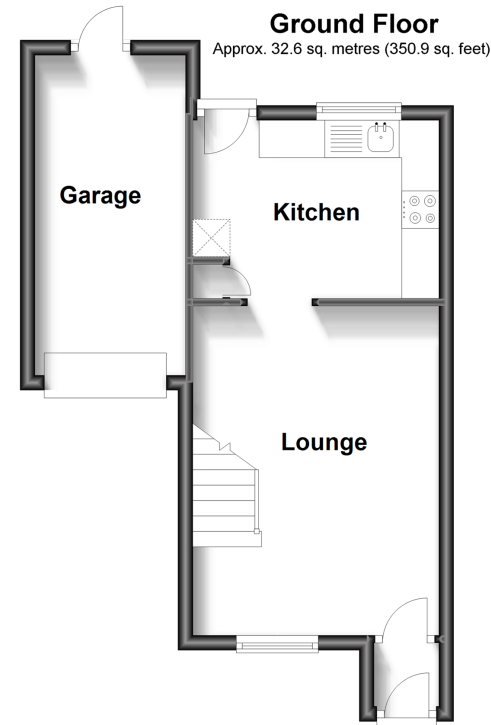
OUTSIDE

Garage

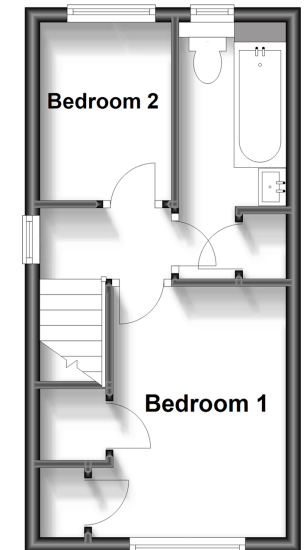
Front Garden

Off Road Parking

Rear Garden



First Floor
Approx. 23.0 sq. metres (247.2 sq. feet)



Call Southwater - 01403 731901 ■ cubittandwest.co.uk

- Legal advice should be taken to verify fixtures/fittings, planning, alterations and/or lease details
- Through a Homewise Home For Life Plan people aged 60+ can secure this property for up to 59% less, by purchasing a Lifetime Lease.

- Appliances & services are untested, dimensions are approximate and floor plans are not to scale