



Price

£530,000

Freehold

4x  1x  2x 

**York Close, Southwater,
Southwater, Horsham,
West Sussex, RH13**

OVER 60?

Secure this property
for up to **59% less!**

cubitt&west
Helping you move forwards



Main features

- Well presented home in a sought after location
- Off road parking and a master en-suite
- Great rear garden offering access to the garage and a summer house
- Beautifully fitted modern kitchen with wooden work surfaces and additional utility area
- Quiet location just a short walk or drive from Southwater's main village amenities

Accommodation

GROUND FLOOR

Entrance Hall
Cloakroom
Dining Room : 10'9 x 8'4 (3.28m x 2.54m)
Lounge : 14'8 x 10'11 (4.47m x 3.33m)
Kitchen : 16'2 x 7'5 (4.93m x 2.26m)
Utility Room : 7'5 x 4'7 (2.26m x 1.40m)
Conservatory : 11'11 x 7'4 (3.63m x 2.24m)

FIRST FLOOR

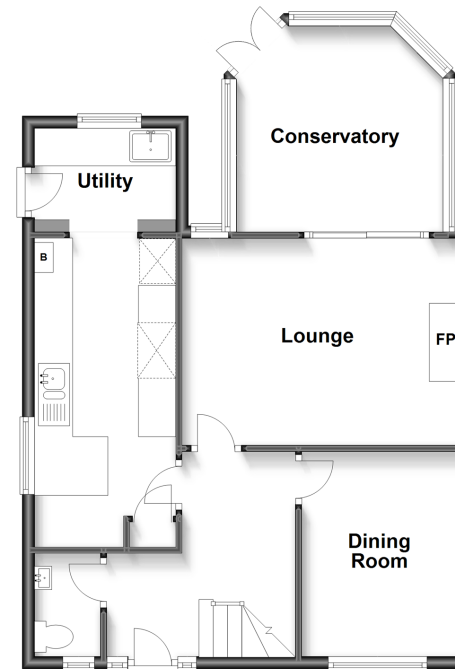
Landing
Bedroom 1: 10'10 x 10'5 (3.30m x 3.18m)
En-suite Shower Room
Bedroom 2: 14'1 x 8'8 (4.30m x 2.64m)
Bedroom 3: 10'6 x 8'4 (3.20m x 2.54m)
Bedroom 4: 7'8 x 6'6 (2.34m x 1.98m)
Bathroom

OUTSIDE

Off Road Parking
Garage
Front Garden
Rear Garden
Summerhouse

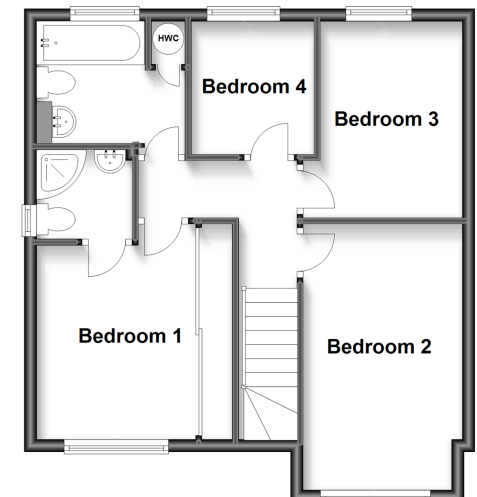
Ground Floor

Approx. 60.3 sq. metres (648.9 sq. feet)



First Floor

Approx. 48.2 sq. metres (519.2 sq. feet)



Call Southwater - 01403 731901 ■ cubittandwest.co.uk

- Legal advice should be taken to verify fixtures/fittings, planning, alterations and/or lease details
- Through a Homewise Home For Life Plan people aged 60+ can secure this property for up to 59% less, by purchasing a Lifetime Lease.

- Appliances & services are untested, dimensions are approximate and floor plans are not to scale



21907024/20230404/LA/LFOG