



**Price**

**£400,000**

**Freehold**

3x  1x  1x 

**Corsletts Avenue,  
Broadbridge Heath,  
Horsham, West Sussex,  
RH12**

**OVER 60?**

Secure this property  
for up to **59% less!**

**cubitt & west**  
Helping you move forwards





## Main features

- Well loved and cared for family home
- Just a short walk to the local village shop, pub and primary school
- Easy access to the local countryside and main road network
- Light and spacious accommodation
- With no onward chain this property is ready to move into

## Accommodation

### GROUND FLOOR

Entrance Hall  
Dining Area: 13'2 x 10'1 (4.02m x 3.08m)  
Lounge Area: 11'2 x 11'0 (3.41m x 3.36m)  
Conservatory: 12'7 x 8'1 (3.84m x 2.47m)  
Kitchen: 10'7 x 7'9 (3.23m x 2.36m)

### FIRST FLOOR

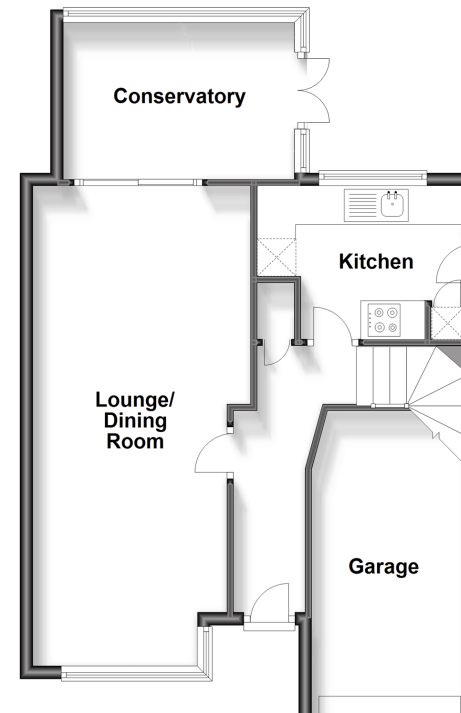
Landing  
Bedroom 1: 11'3 x 11'2 (3.43m x 3.41m)  
Bedroom 2: 11'2 x 10'4 (3.41m x 3.15m)  
Bedroom 3: 8'8 x 7'3 (2.64m x 2.21m)  
Separate Toilet  
Bathroom: 8'7 x 4'11 (2.62m x 1.50m)

### OUTSIDE

Garage: 16'3 x 7'11 (4.96m x 2.41m)  
Front & Rear Gardens  
Driveway

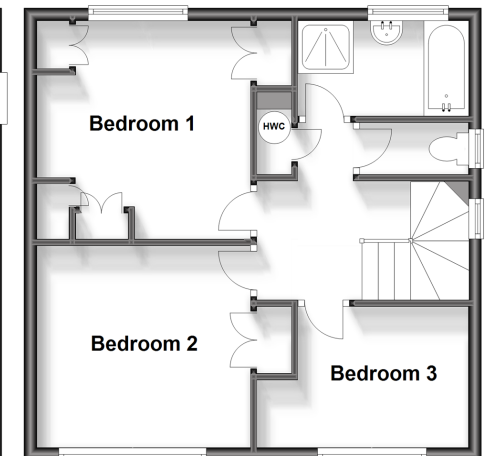
### Ground Floor

Approx. 59.6 sq. metres (641.5 sq. feet)



### First Floor

Approx. 44.9 sq. metres (483.1 sq. feet)



**Call Horsham - 01403 269268 ■ cubittandwest.co.uk**

■ Legal advice should be taken to verify fixtures/fittings, planning, alterations and/or lease details  
■ Through a Homewise Home For Life Plan people aged 60+ can secure this property for up to 59% less, by purchasing a Lifetime Lease.

■ Appliances & services are untested, dimensions are approximate and floor plans are not to scale



21907410/20231024/SEH/CB