



OVER 60?

Secure this property
for up to **59% less!**

Price

£950,000

Freehold

4x  3x  3x 

**Welcome Place,
Southwater, Horsham,
West Sussex, RH13**

cubitt&west
Helping you move forwards



Main features

- Exclusive small development built by Devine Homes
- Stylish country living with solar panels
- Open light rooms with three versatile reception rooms
- Stunning open plan bespoke master class kitchen with quartz work surfaces, large central island and bi-fold doors to the garden
- Under floor heating throughout the ground floor
- Solid oak banisters and oak door
- Lovely rear garden ideal for families

Accommodation

GROUND FLOOR

Entrance Hall

Cloakroom : 7'2 x 3'2 (2.19m x 0.97m)

Lounge : 23'9 x 12'8 (7.24m x 3.86m)

Utility Room : 7'9 x 6'3 (2.36m x 1.91m)

Kitchen / Dining Room : 25'2 x 19'4 (7.68m x 5.90m)

Study : 10'10 x 7'2 (3.30m x 2.19m)

Family Room : 11'7 x 11'0 (3.53m x 3.36m)

FIRST FLOOR

Landing

Bedroom 1: 14'6 x 9'2 (4.42m x 2.80m)

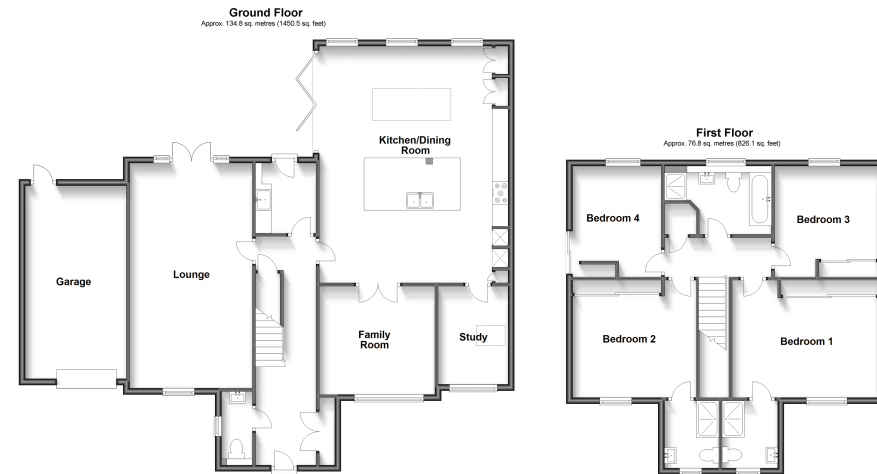
En-suite Shower Room

Bedroom 2: 12'10 x 9'2 (3.91m x 2.80m)

En-suite Shower Room

Bedroom 3: 11'5 x 10'3 (3.48m x 3.13m)

Bedroom 4: 11'5 x 8'11 (3.48m x 2.72m)



Call Southwater - 01403 731901 ■ cubittandwest.co.uk

■ Legal advice should be taken to verify fixtures/fittings, planning, alterations and/or lease details
 ■ Through a Homewise Home For Life Plan people aged 60+ can secure this property for up to 59% less, by purchasing a Lifetime Lease.

■ Appliances & services are untested, dimensions are approximate and floor plans are not to scale



21908906/20240222/OS/LFOG