



Price
£375,000

Freehold

2x  1x  1x 

**Heasman Place,
Southwater, Horsham,
West Sussex, RH13**

OVER 60?

Secure this property
for up to **59% less!**

cubitt&west
Helping you move forwards



Main features

- Beautifully built new home built in 2019
- Remaining NHBC new build certificate
- Master en-suite and handy ground floor cloakroom
- Off road allocated parking bays for two cars and a recently added electric car charging point
- Pretty rear garden with rear gated access, to the front of the property there is a lovely woodland outlook

Accommodation

GROUND FLOOR

Entrance Hall
Cloakroom
Kitchen : 10'6 x 7'6 (3.20m x 2.29m)
Lounge : 16'6 x 14'8 (5.03m x 4.47m)

FIRST FLOOR

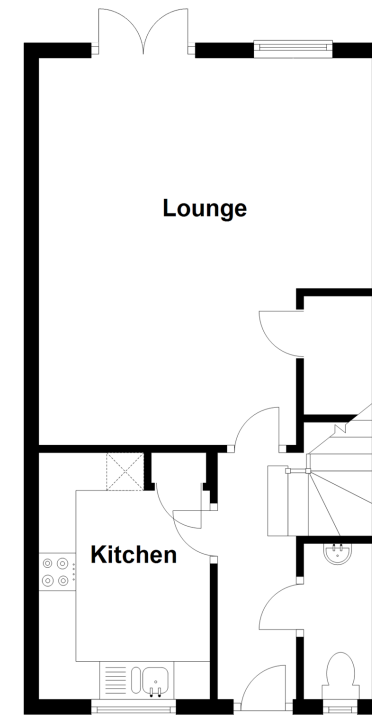
Landing
Bedroom 1: 11'4 x 10'4 (3.46m x 3.15m)
En-suite : 6'6 x 6'4 (1.98m x 1.93m)
Bedroom 2: 14'8 x 10'9 (4.47m x 3.28m)
Bathroom : 7'7 x 5'6 (2.31m x 1.68m)

OUTSIDE

Off Road Parking
Rear Garden

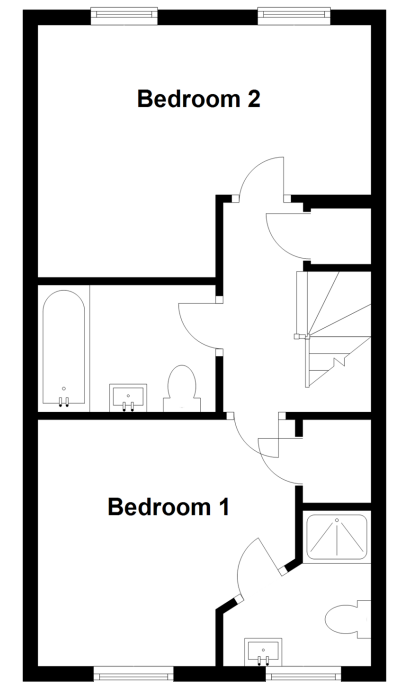
Ground Floor

Approx. 38.0 sq. metres (409.4 sq. feet)



First Floor

Approx. 38.0 sq. metres (409.4 sq. feet)



Call Southwater - 01403 731901 ■ cubittandwest.co.uk

- Legal advice should be taken to verify fixtures/fittings, planning, alterations and/or lease details
- Through a Homewise Home For Life Plan people aged 60+ can secure this property for up to 59% less, by purchasing a Lifetime Lease.

- Appliances & services are untested, dimensions are approximate and floor plans are not to scale

