



OVER 60?

Secure this property
for up to **59% less!**

Price

£450,000

Freehold

3x  2x  1x 

**Centenary Road,
Southwater, Horsham,
West Sussex, RH13**

cubitt&west
Helping you move forwards



Ground Floor

Approx. 62.8 sq. metres (675.7 sq. feet)

Main features

- Beautifully built family home
- Located on the beautiful mulberry fields development by Miller Homes
- Remaining NHBC certificate and main en-suite
- Off road parking on a driveway for 2 cars and a single garage great for a car or storage
- Lovely paved and lawned rear garden with fenced boundaries and direct access to the garage

Accommodation

GROUND FLOOR

Entrance Hall

Kitchen : 10'6 x 9'6 (3.20m x 2.90m)

Lounge : 15'9 x 14'7 (4.80m x 4.45m)

Cloakroom : 6'2 x 3'8 (1.88m x 1.12m)

FIRST FLOOR

Landing

Bedroom 1: 13'10 x 10'11 (4.22m x 3.33m)

En-suite Shower Room : 6'1 x 4'6 (1.86m x 1.37m)

Bedroom 2: 11'7 x 9'6 (3.53m x 2.90m)

Bedroom 3: 10'0 x 6'1 (3.05m x 1.86m)

Bathroom

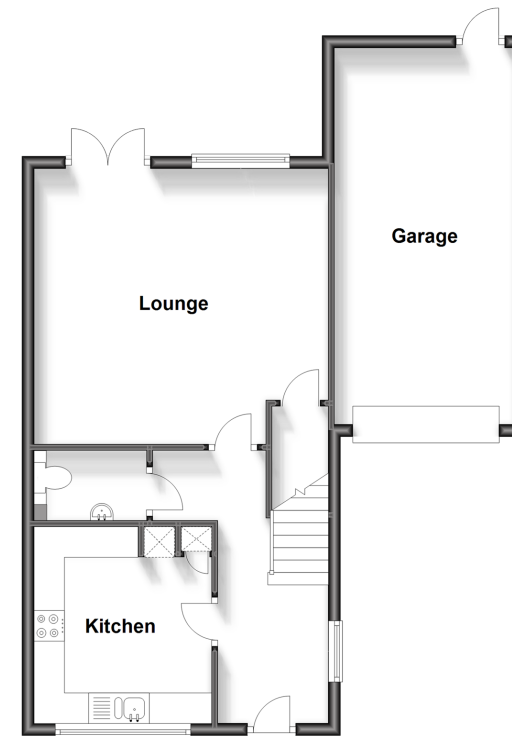
OUTSIDE

Front Garden

Off Road Parking

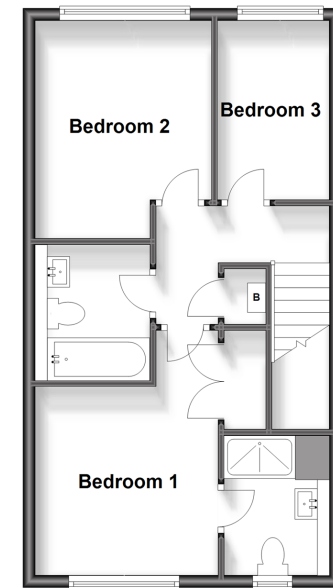
Garage

Rear Garden



First Floor

Approx. 44.0 sq. metres (473.7 sq. feet)



Call Southwater - 01403 731901 ■ cubittandwest.co.uk

- Legal advice should be taken to verify fixtures/fittings, planning, alterations and/or lease details
- Through a Homewise Home For Life Plan people aged 60+ can secure this property for up to 59% less, by purchasing a Lifetime Lease.

- Appliances & services are untested, dimensions are approximate and floor plans are not to scale



21909139/20230919/LA/LFOG