



Price

£119,950

Leasehold

2x  1x  1x 

**Farm Close, Barns
Green, Horsham, West
Sussex, RH13**

cubitt&west
Helping you move forwards



Main features

- Retirement housing situated in the village of Barns Green
- Short distance from local shops and the beautiful Sumners Pond
- Residents lounge, laundry room and beautifully kept gardens
- Unallocated car park offering parking for all 14 flats
- The property is available for over 60's and are leasehold
- Resident management staff Monday - Friday and care line alarm service

Accommodation

FIRST FLOOR

Entrance Hall

Lounge / Dining Room : 14'3 x 12'3 (4.35m x 3.74m)

Kitchen : 11'7 x 5'8 (3.53m x 1.73m)

Bedroom 1: 10'3 x 9'8 (3.13m x 2.95m)

Bedroom 2: 11'7 x 6'5 (3.53m x 1.96m)

Shower Room : 8'9 x 6'9 (2.67m x 2.06m)

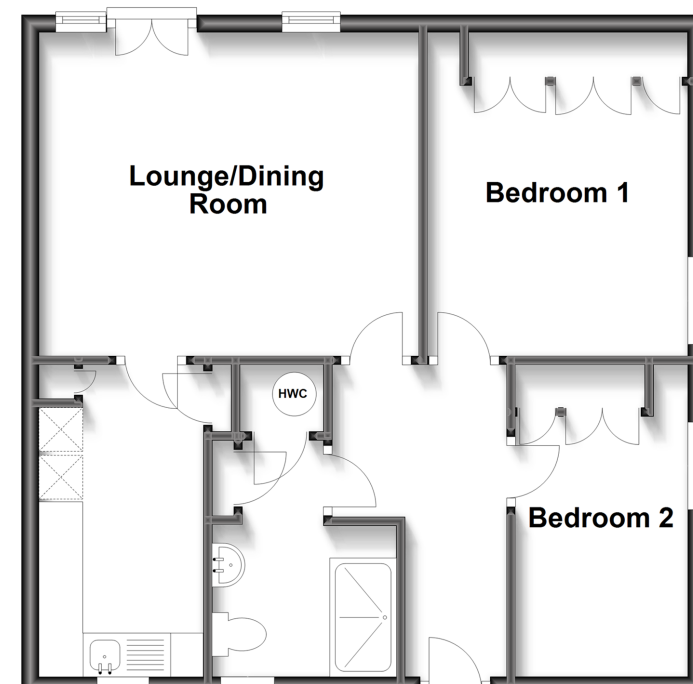
OUTSIDE

Unallocated off road parking

Communal Gardens

First Floor

Approx. 54.5 sq. metres (587.0 sq. feet)



Call Southwater - 01403 731901 ■ cubittandwest.co.uk

■ Legal advice should be taken to verify fixtures/fittings, planning, alterations and/or lease details

■ Appliances & services are untested, dimensions are approximate and floor plans are not to scale



21909167/20221007/LA/LFOG