



OVER 60?

Secure this property
for up to **59% less!**

Price

£750,000

Freehold

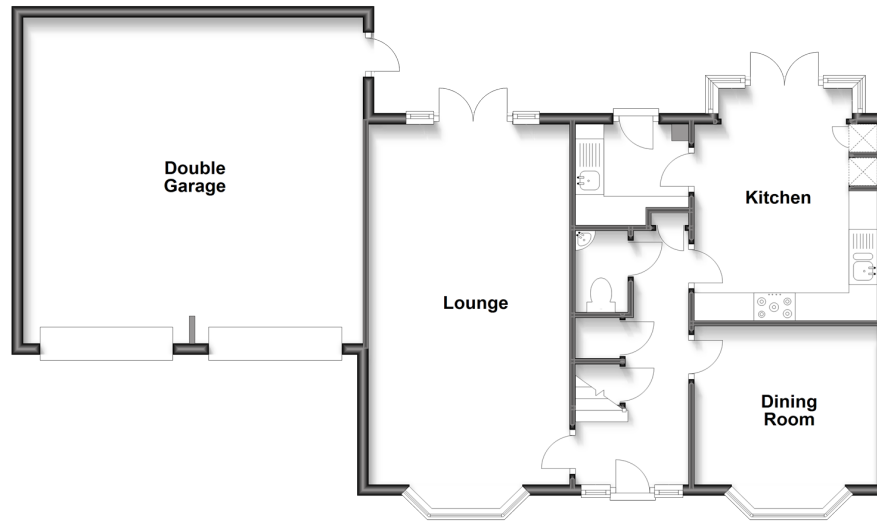
5x  4x  2x 

**Martindales,
Southwater, Horsham,
West Sussex, RH13**

cubitt&west
Helping you move forwards

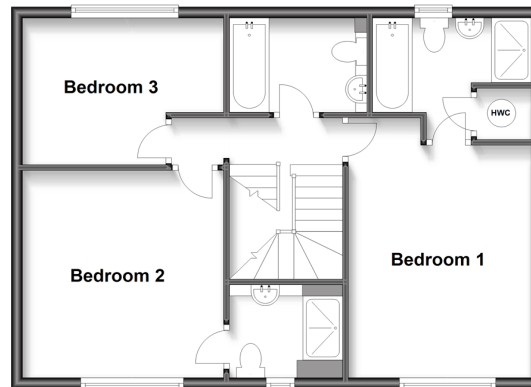
Ground Floor

Approx. 96.1 sq. metres (1034.6 sq. feet)



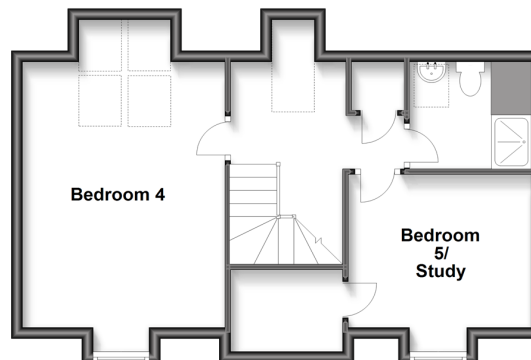
First Floor

Approx. 58.3 sq. metres (627.9 sq. feet)



Second Floor

Approx. 46.8 sq. metres (503.6 sq. feet)



Accommodation

Entrance Hall

Lounge : 24'3 x 11'7 (7.40m x 3.53m)

Kitchen: 14'5 x 10'6 (4.40m x 3.20m)

Utility : 6'9 x 6'8 (2.06m x 2.03m)

Cloakroom : 4'9 x 3'2 (1.45m x 0.97m)

Dining Room : 11'6 x 10'7 (3.51m x 3.23m)

FIRST FLOOR

Landing

Bedroom 1: 13'8 x 10'6 (4.17m x 3.20m)

En-suite : 9'8 x 7'4 (2.95m x 2.24m)

Bedroom 2: 12'3 x 11'6 (3.74m x 3.51m)

En-suite Shower Room : 6'6 x 5'6 (1.98m x 1.68m)

Bedroom 3: 11'7 x 8'10 (3.53m x 2.69m)

Bathroom : 7'7 x 5'7 (2.31m x 1.70m)

SECOND FLOOR

Landing

Bedroom 4: 17'9 x 11'5 (5.41m x 3.48m)

Bedroom 5/Study: 10'8 x 9'0 (3.25m x 2.75m)

Shower Room : 7'5 x 6'1 (2.26m x 1.86m)

OUTSIDE

Off Road Parking

Double Garage

Rear Garden



Main features

- Substantial detached family home
- Built just under 10 years ago as part of a small development
- Arranged over three floors with a ground floor cloakroom and utility
- Two en-suite shower rooms, family bathroom and shower room in the second floor
- Offering a double garage and off road parking for two/three cars



Nearest Schools

Primary Schools: Southwater Junior Academy 0.9 miles, Castlewood Primary 1.3 miles, Itchingfield Primary 1.7 miles

Secondary Schools: Tanbridge House School 3.1 miles,



Transport Information

Train Stations: Billingshurst 6.3 miles, Horsham 2.8 miles, Christs Hospital 2.7 miles



Address

Martindales, Southwater, Horsham, West Sussex, RH13



Directions

For directions to this property please contact us.



cubitt&west
Helping you move forwards

Call Southwater Branch 01403 731901 ■ cubittandwest.co.uk



■ Legal advice should be taken to verify fixtures/fittings, planning, alterations and/or lease details ■ Appliances & services are untested, dimensions are approximate and floor plans are not to scale
■ Through a Homewise Home For Life Plan people aged 60+ can secure this property for up to 59% less, by purchasing a Lifetime Lease.



21909197/20230926/LA/LFOG