



Video Tour available

**Price**

**£200,000**

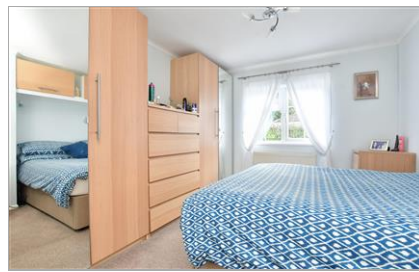
**Freehold**

2x  1x  1x 

Roundstone Park, Worthing Road, West  
Grinstead, Horsham, West Sussex, RH13

**cubitt&west**  
Helping you move forwards





## Main features

- Well presented spacious double unit
- Located on the very sought after Roundstone Park
- Lovely garden, immaculate exterior
- Newly paved driveway for at least one car maybe two depending on size
- Close to a bus stop and a short walk away from Southwater's local village amenities

## Accommodation

### GROUND FLOOR

Front Porch

Kitchen : 12'1 x 9'8 (3.69m x 2.95m)

Lounge / Diner: 19'8 x 10'6 (6.00m x 3.20m)

Bedroom 1: 10'3 x 9'8 (3.13m x 2.95m)

Bedroom 2: 9'7 x 6'6 (2.92m x 1.98m)

Shower Room : 6'9 x 6'5 (2.06m x 1.96m)

Conservatory : 9'7 x 7'2 (2.92m x 2.19m)

### OUTSIDE

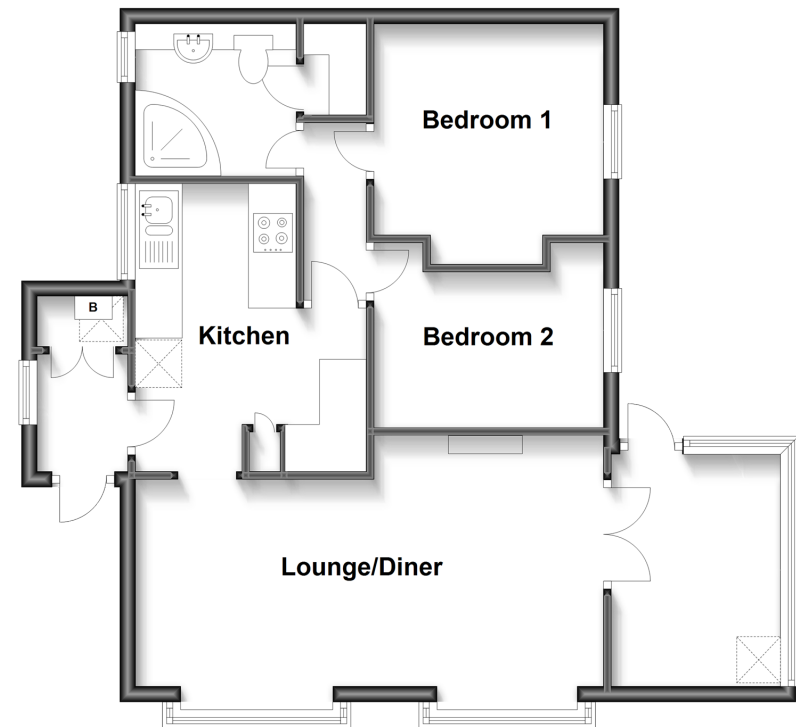
Off Road Parking

Rear Garden

Balcony

### Ground Floor

Approx. 61.3 sq. metres (660.3 sq. feet)



Call Southwater - 01403 731901 ■ [cubittandwest.co.uk](http://cubittandwest.co.uk)

■ If buying to let, the energy rating will need to be improved to at least 'E' rating before you can let the property

■ Appliances & services are untested, dimensions are approximate and floor plans are not to scale

■ Legal advice should be taken to verify fixtures/fittings, planning, alterations and/or lease details



21909201/20230223/LA/LFOG