



OVER 60?

Secure this property
for up to **59% less!**

Price

£300,000

Leasehold

2x  1x  1x 

**The Mead House, Station
Road North, Southwater,
Horsham, West Sussex,
RH13**

cubitt&west
Helping you move forwards



Main features

- Spacious and beautifully presented maisonette
- Offering modern accommodation over two floors with private entrance
- Well maintained communal courtyard garden
- Open plan kitchen/living area
- Allocated parking space

Accommodation

FIRST FLOOR

Entrance Hall

Living/Dining area: 18'0 x 14'0 (5.49m x 4.27m)

Kitchen: 11'6 x 8'5 (3.51m x 2.57m)

Utility Room: 6'4 x 4'0 (1.93m x 1.22m)

Bathroom : 10'7 x 8'3 (3.23m x 2.52m)

SECOND FLOOR

Landing

Bedroom 1: 19'5 x 13'6 (5.92m x 4.12m)

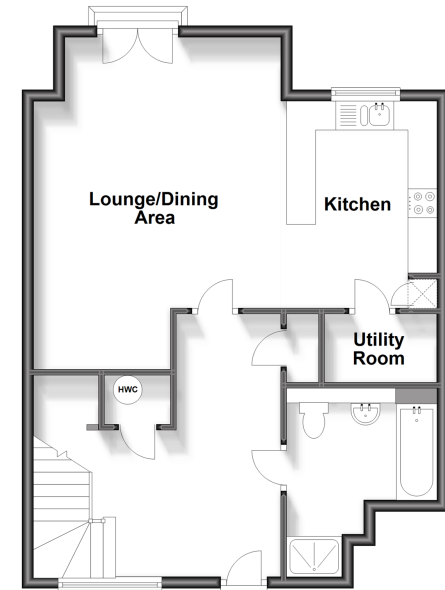
Bedroom 2: 13'5 x 12'6 (4.09m x 3.81m)

OUTSIDE

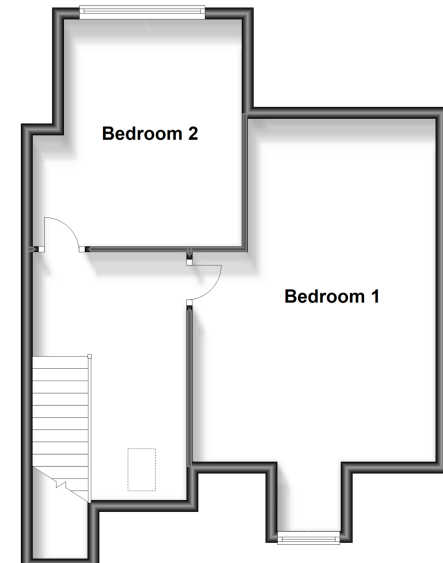
Communal Courtyard Garden

Allocated Parking

Ground Floor
Approx. 59.4 sq. metres (639.9 sq. feet)



First Floor
Approx. 49.2 sq. metres (529.1 sq. feet)



Call Southwater - 01403 731901 ■ cubittandwest.co.uk

- Legal advice should be taken to verify fixtures/fittings, planning, alterations and/or lease details
- Appliances & services are untested, dimensions are approximate and floor plans are not to scale
- Through a Homewise Home For Life Plan people aged 60+ can secure this property for up to 59% less, by purchasing a Lifetime Lease.



21909244/20240423/LA/LFOG