



Price
£500,000

Freehold

4x  2x  2x 

**Leeds Close,
Southwater, Horsham,
West Sussex, RH13**

OVER 60?

Secure this property
for up to **59% less!**

cubitt&west
Helping you move forwards



Main features

- **Extended family home located in a popular close**
- **Offering great sized bedrooms due to the rear extension**
- **Spacious entrance hallway with handy ground floor cloakroom**
- **Lovely 16ft kitchen with space for a small table and chairs, with a small utility for all those essential white goods**
- **Lovely lawned rear garden with side gated access**
- **Off road parking and a single garage ideal for storage. No chain**

Accommodation

GROUND FLOOR

Entrance Hall

Cloakroom : 5'5 x 3'6 (1.65m x 1.07m)

Lounge : 17'6 x 14'5 (5.34m x 4.40m)

Dining Room : 10'7 x 8'3 (3.23m x 2.52m)

Kitchen : 16'2 x 7'4 (4.93m x 2.24m)

Utility: 7'9 x 4'8 (2.36m x 1.42m)

FIRST FLOOR

Landing

Bedroom 1: 10'7 x 8'8 (3.23m x 2.64m)

En-suite Shower Room : 5'2 x 4'7 (1.58m x 1.40m)

Bedroom 2: 16'2 x 7'6 (4.93m x 2.29m)

Bedroom 3: 14'2 x 8'6 (4.32m x 2.59m)

Bedroom 4: 13'3 x 6'0 (4.04m x 1.83m)

Bathroom : 8'2 x 6'3 (2.49m x 1.91m)

OUTSIDE

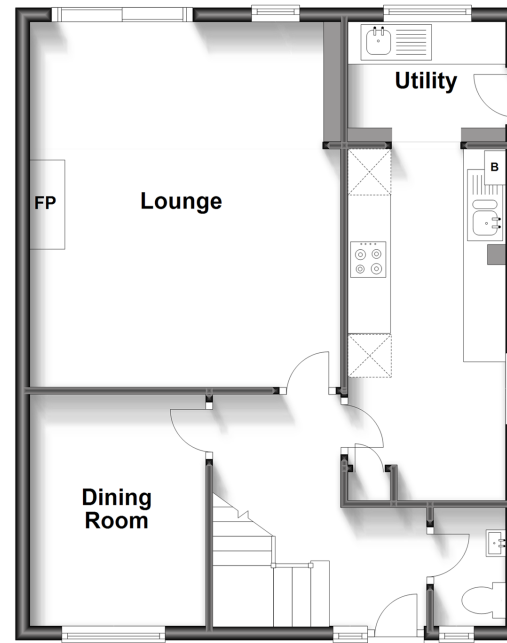
Garage

Off Road Parking

Front & Rear Garden

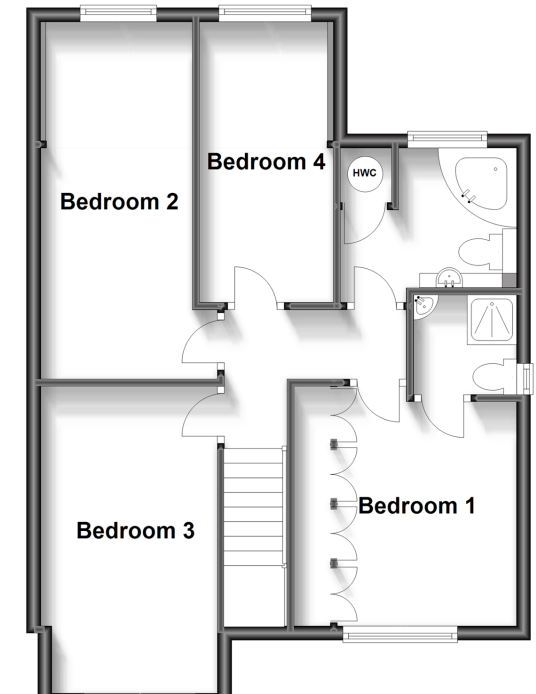
Ground Floor

Approx. 57.1 sq. metres (614.9 sq. feet)



First Floor

Approx. 55.1 sq. metres (593.5 sq. feet)



Call Southwater - 01403 731901 ■ cubittandwest.co.uk

■ Legal advice should be taken to verify fixtures/fittings, planning, alterations and/or lease details
 ■ Through a Homewise Home For Life Plan people aged 60+ can secure this property for up to 59% less, by purchasing a Lifetime Lease.

■ Appliances & services are untested, dimensions are approximate and floor plans are not to scale



21909271/20231023/LFOG/LFOG