



OVER 60?

Secure this property
for up to **59% less!**

Price

£459,950

Freehold

3x  2x  1x 

**Huntley Mews,
Southwater, Horsham,
West Sussex, RH13**

cubitt&west
Helping you move forwards



Main features

- Delightful family home located on the beautiful Broadacres development
- A Berkeleys build with the remaining new build certificate
- En-suite to bedroom one
- Pretty garden to the rear and off road parking for two cars to the front of the property

Accommodation

GROUND FLOOR

Entrance Hall

Kitchen : 11'8 x 8'1 (3.56m x 2.47m)

Cloakroom: 6'2 x 3'1 (1.88m x 0.94m)

Lounge : 18'4 x 15'5 (5.59m x 4.70m)

FIRST FLOOR

Bedroom 1: 18'4 x 10'3 (5.59m x 3.13m)

En-suite : 7'5 x 4'9 (2.26m x 1.45m)

Bedroom 2: 11'7 x 8'6 (3.53m x 2.59m)

Bathroom : 7'3 x 5'5 (2.21m x 1.65m)

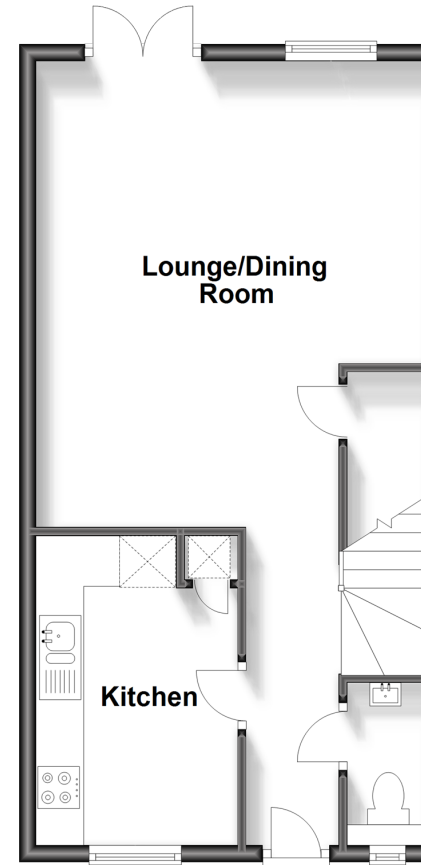
OUTSIDE

Off Road Parking

Rear Garden

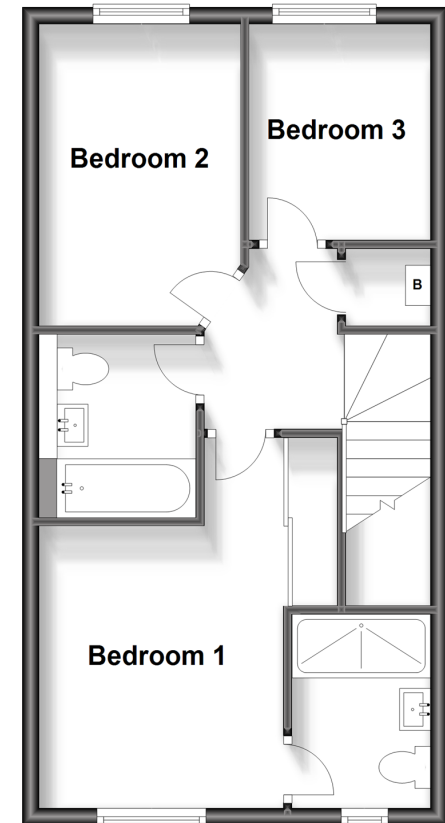
Ground Floor

Approx. 43.8 sq. metres (471.9 sq. feet)



First Floor

Approx. 43.4 sq. metres (467.3 sq. feet)



Call Southwater - 01403 731901 ■ cubittandwest.co.uk

- Legal advice should be taken to verify fixtures/fittings, planning, alterations and/or lease details
- Appliances & services are untested, dimensions are approximate and floor plans are not to scale
- Through a Homewise Home For Life Plan people aged 60+ can secure this property for up to 59% less, by purchasing a Lifetime Lease.



21909275/20230706/LFOG/LFOG