



Price
£135,000

2x  1x  1x 

**Roundstone Park,
Worthing Road,
Southwater, Horsham,
West Sussex, RH13**

cubitt&west
Helping you move forwards



Main features

- Charming park home located in the sought after Roundstone Park
- Lovely rear and side garden with space for a table and chairs
- Spacious kitchen, lounge overlooking the front and two entrances
- Available for over 50's, cash buyers only and unfortunately no pets
- Monthly fees apply
- A short walk away from local village amenities in the square

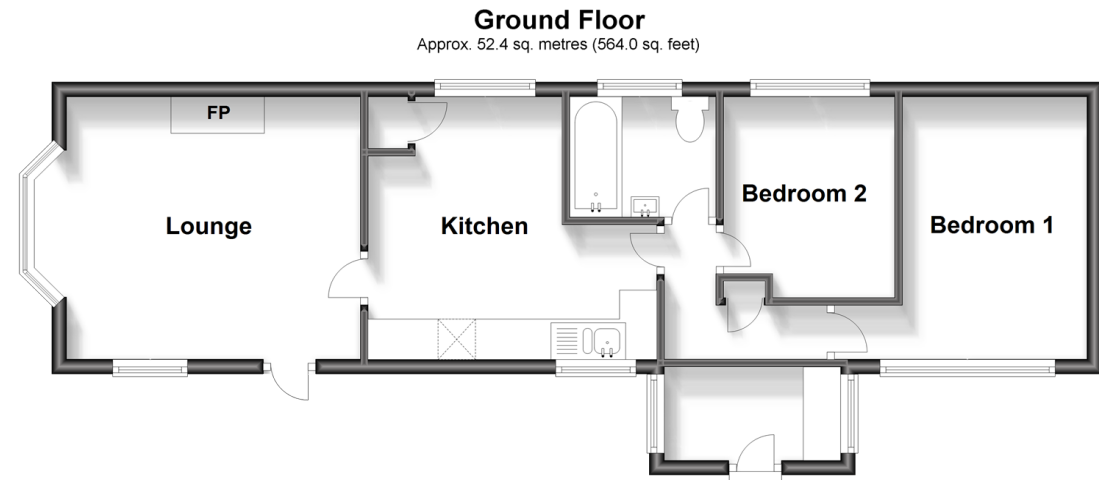
Accommodation

GROUND FLOOR

Entrance Hall : 7'8 x 4'2 (2.34m x 1.27m)
 Lounge : 12'9 x 11'8 (3.89m x 3.56m)
 Kitchen : 12'7 x 11'7 (3.84m x 3.53m)
 Bedroom 1: 11'8 x 7'7 (3.56m x 2.31m)
 Bedroom 2: 9'0 x 7'5 (2.75m x 2.26m)
 Bathroom : 6'5 x 5'5 (1.96m x 1.65m)

OUTSIDE

Garden



Call Southwater - 01403 731901 ■ cubittandwest.co.uk

■ Legal advice should be taken to verify fixtures/fittings, planning, alterations and/or lease details

■ Appliances & services are untested, dimensions are approximate and floor plans are not to scale