



OVER 60?

Secure this property
for up to **59% less!**

Price

£375,000

Freehold

2x  1x  1x 

**Nyes Lane, Southwater,
Horsham, West Sussex,
RH13**

cubitt&west
Helping you move forwards



Main features

- **Spacious home perfect for first time buyers**
- **Kitchen that overlooks the rear garden**
- **Both bedrooms benefit from being doubles**
- **Secluded rear garden with fenced boundaries, laid lawn and side gated access**
- **Benefits from off road parking via a driveway for 2/3 cars depending on vehicle size**

Accommodation

GROUND FLOOR

Entrance Hall

Lounge : 15'11 x 10'7 (4.85m x 3.23m)

Kitchen : 13'10 x 7'9 (4.22m x 2.36m)

FIRST FLOOR

Landing

Bedroom 1: 12'0 x 8'10 (3.66m x 2.69m)

Bedroom 2: 13'10 x 7'7 (4.22m x 2.31m)

Bathroom

OUTSIDE

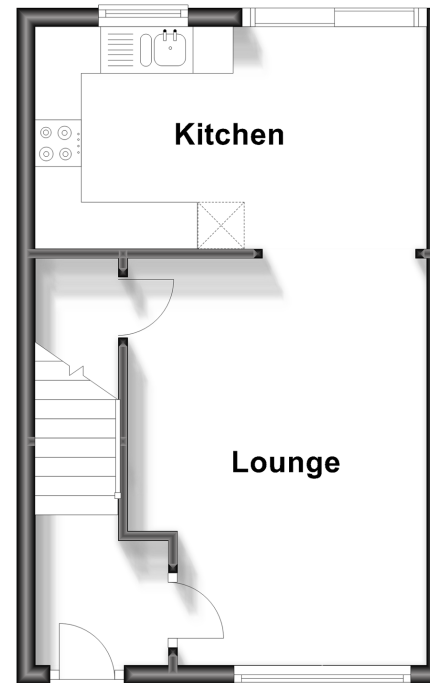
Front Garden

Off Road Parking

Rear Garden

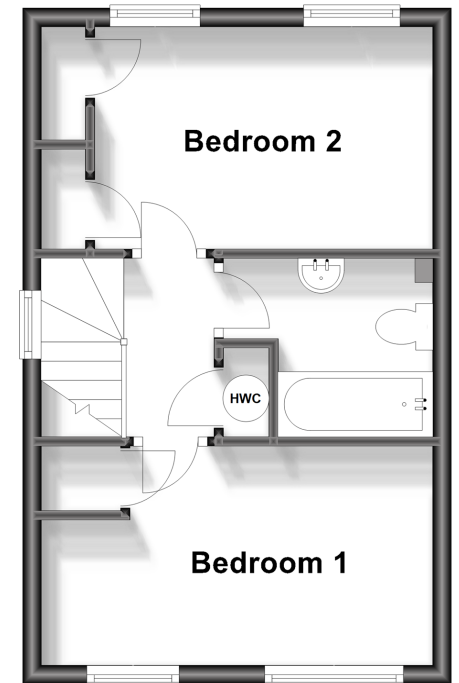
Ground Floor

Approx. 29.1 sq. metres (312.8 sq. feet)



First Floor

Approx. 29.1 sq. metres (312.8 sq. feet)



Call Southwater - 01403 731901 ■ cubittandwest.co.uk

- Legal advice should be taken to verify fixtures/fittings, planning, alterations and/or lease details
- Through a Homewise Home For Life Plan people aged 60+ can secure this property for up to 59% less, by purchasing a Lifetime Lease.

- Appliances & services are untested, dimensions are approximate and floor plans are not to scale



21909293/20230920/DW/LFOG