



Price
£650,000

Freehold

3x  1x  2x 

**Southwater Street,
Southwater, Horsham,
West Sussex, RH13**

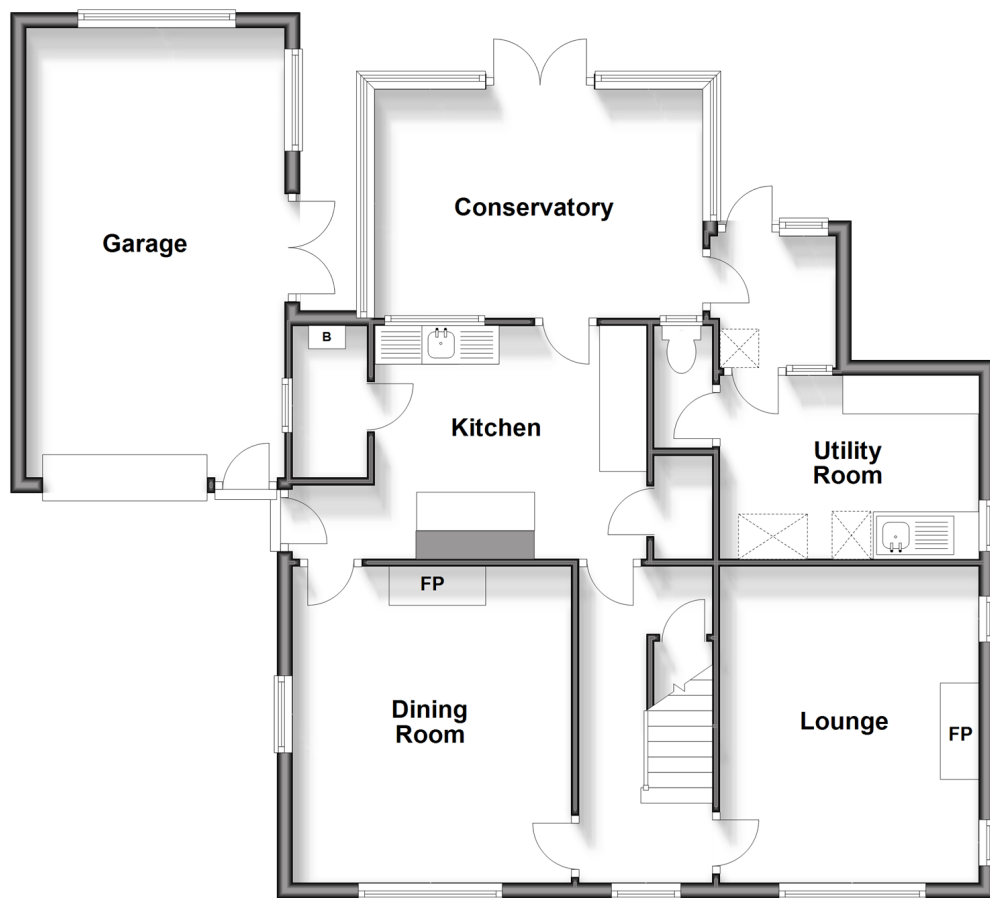
OVER 60?

Secure this property
for up to **59% less!**

cubitt&west
Helping you move forwards

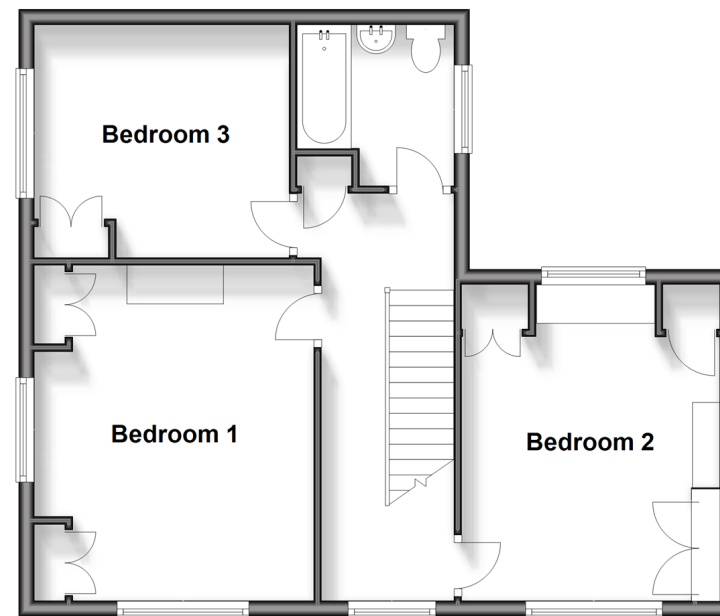
Ground Floor

Approx. 98.0 sq. metres (1054.5 sq. feet)



First Floor

Approx. 54.9 sq. metres (591.1 sq. feet)



Accommodation

GROUND FLOOR

Entrance Hall

Cloakroom

Lounge : 14'2 x 11'0 (4.32m x 3.36m)

Dining Room : 14'10 x 12'0 (4.52m x 3.66m)

Kitchen : 11'9 x 10'7 (3.58m x 3.23m)

Conservatory: 14'10 x 10'3 (4.52m x 3.13m)

Utility Room: 10'8 x 8'3 (3.25m x 2.52m)

FIRST FLOOR

Landing

Bedroom 1: 14'4 x 11'11 (4.37m x 3.63m)

Bedroom 2: 10'11 x 9'10 (3.33m x 3.00m)

Bedroom 3: 13'7 x 10'11 (4.14m x 3.33m)

Bathroom : 6'9 x 6'8 (2.06m x 2.03m)

OUTSIDE

Off Road Parking

Garage

Rear Garden



Main features

- Fantastic sized sunny aspect rear garden
- Character period features, built in the 1930's
- Short distance from the local village shops
- Within school catchment area of local schools
- Perfect project for anyone looking to put their stamp on somewhere



Nearest Schools

Primary Schools: Castlewood Primary 0.3 miles, Southwater Junior Academy 0.4 miles, Itchingfield Primary 1.7 miles

Secondary Schools: Christ's Hospital 0.9 miles, Tanbridge



Transport Information

Train Stations: Christs Hospital 1.3 miles, Horsham 2.4 miles, Littlehaven 3.5 miles



Address

Southwater Street, Southwater, Horsham, West Sussex, RH13



Directions

For directions to this property please contact us.



cubitt&west
Helping you move forwards

Call Southwater Branch 01403 731901 ■ cubittandwest.co.uk



- Legal advice should be taken to verify fixtures/fittings, planning, alterations and/or lease details
- Appliances & services are untested, dimensions are approximate and floor plans are not to scale
- Through a Homewise Home For Life Plan people aged 60+ can secure this property for up to 59% less, by purchasing a Lifetime Lease.



21909299/20240201/LA/OS