



Price

£450,000

Freehold

3x  1x  1x 

**Windsor Close,
Southwater, West
Sussex, RH13**

OVER 60?

Secure this property
for up to **59% less!**

cubitt&west
Helping you move forwards



Main features

- Well presented family home located in a quiet close
- Convenience of downstairs cloakroom
- Conservatory overlooking the garden
- Lovely landscaped rear garden with side access and door to garage
- Single garage with light and power

Accommodation

GROUND FLOOR

Entrance Hall

Cloakroom

Kitchen: 13'7 x 7'4 (4.14m x 2.24m)

Lounge/Dining Room: 24'0 up to bay x 9'8 at widest point (7.32m x 2.95m)

Conservatory: 11'1 at widest point x 8'2 at widest point (3.38m x 2.49m)

FIRST FLOOR

Landing

Bedroom 1: 11'1 up to fitted wardrobes x 10'5 (3.38m x 3.18m)

Bedroom 2: 10'7 x 8'2 up to fitted wardrobes (3.23m x 2.49m)

Bedroom 3: 8'1 x 6'5 (2.47m x 1.96m)

Shower Room: 6'5 x 5'5 (1.96m x 1.65m)

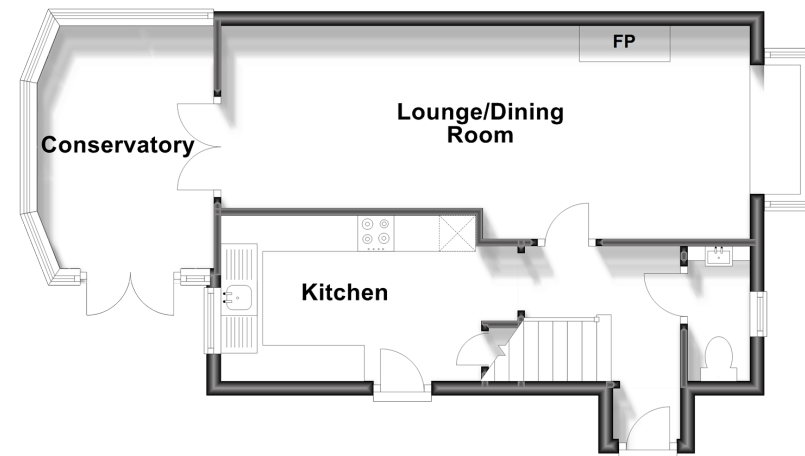
OUTSIDE

Garage & Driveway

Front & Rear Garden

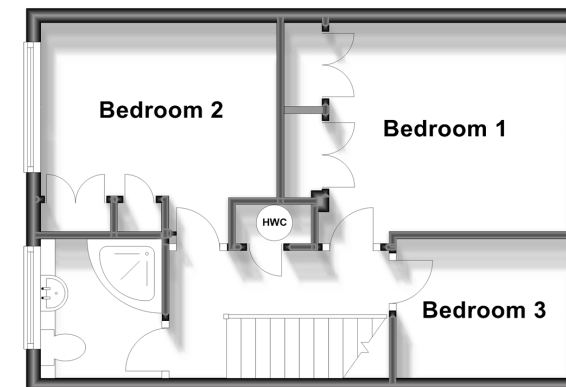
Ground Floor

Approx. 45.8 sq. metres (493.1 sq. feet)



First Floor

Approx. 36.3 sq. metres (390.3 sq. feet)



Call Southwater - 01403 731901 ■ cubittandwest.co.uk

- Legal advice should be taken to verify fixtures/fittings, planning, alterations and/or lease details
- Appliances & services are untested, dimensions are approximate and floor plans are not to scale
- Through a Homewise Home For Life Plan people aged 60+ can secure this property for up to 59% less, by purchasing a Lifetime Lease.



21909302/20230817/SEH/LFOG