



OVER 60?

Secure this property
for up to **59% less!**

Price

£400,000

Freehold

3x  1x  2x 

**Bamborough Close,
Southwater, Horsham,
West Sussex, RH13**

cubitt&west
Helping you move forwards



Main features

- Spacious family home situated in a quiet cul-de-sac
- Offered with no ongoing chain
- Ground floor extension, giving a fantastic entertaining space
- Great sized bedrooms, the third bedroom was extended in the 90's so there is no longer a box room
- The pretty rear garden is lovely and secluded and offers direct access to the single garage which has lighting and power

Accommodation

GROUND FLOOR

Entrance Hall
Cloakroom
Lounge : 14'10 x 13'2 (4.52m x 4.02m)
Kitchen: 8'3 x 8'3 (2.52m x 2.52m)
Breakfast Area: 10'4 x 6'9 (3.15m x 2.06m)
Dining Area: 11'4 x 8'2 (3.46m x 2.49m)

FIRST FLOOR

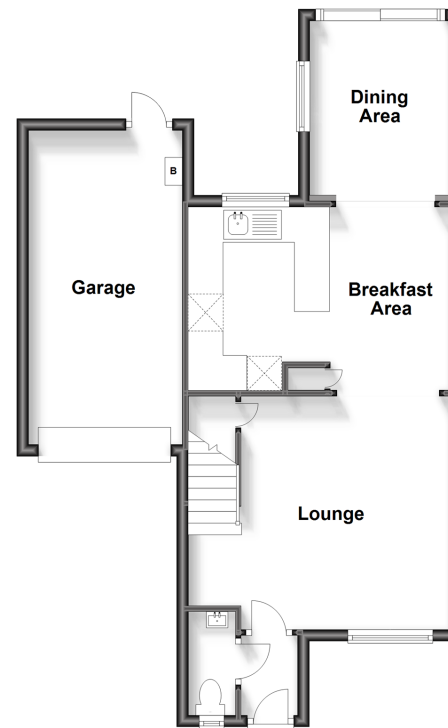
Landing
Bedroom 1: 11'9 x 8'7 (3.58m x 2.62m)
Bedroom 2: 9'6 x 7'8 (2.90m x 2.34m)
Bedroom 3: 14'0 x 6'11 (4.27m x 2.11m)
Bathroom

OUTSIDE

Front Garden
Garage
Off Road Parking
Rear Garden

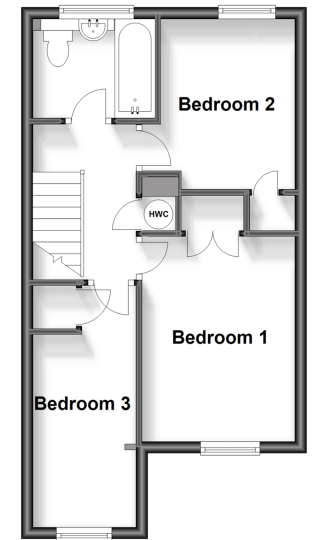
Ground Floor

Approx. 58.5 sq. metres (629.9 sq. feet)



First Floor

Approx. 36.1 sq. metres (388.9 sq. feet)



Call Southwater - 01403 731901 ■ cubittandwest.co.uk

■ Legal advice should be taken to verify fixtures/fittings, planning, alterations and/or lease details
■ Through a Homewise Home For Life Plan people aged 60+ can secure this property for up to 59% less, by purchasing a Lifetime Lease.

■ Appliances & services are untested, dimensions are approximate and floor plans are not to scale



21909313/20231010/LFOG/LFOG