



Price

£275,000

Leasehold

2x  1x  1x 

**Roman Lane,
Southwater, Horsham,
West Sussex, RH13**

cubitt&west
Helping you move forwards



Main features

- Very spacious and light first floor flat
- Main bedroom with a walk in wardrobe area
- Secure entry phone system and allocated parking space
- Amazing 18'6ft open plan kitchen /living area with plenty of storage space and room for an Americana fridge/freezer
- Offered with a 50% share or more up to 100% dependant on buyers preference
- Quiet communal entrance and no chain

Accommodation

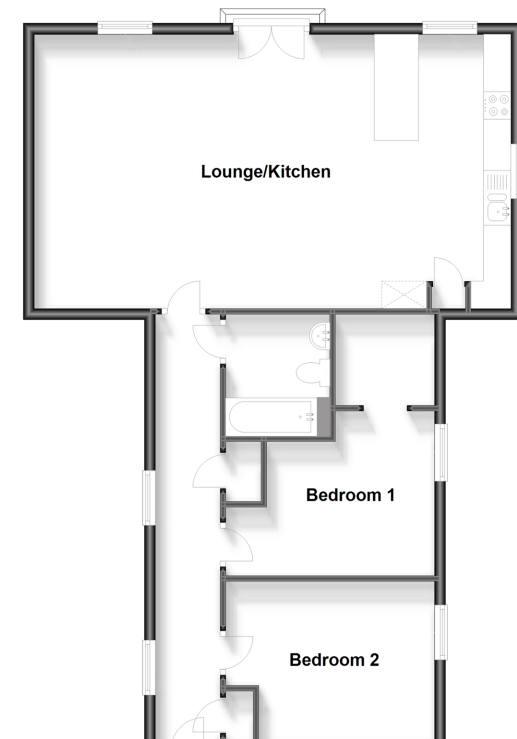
FIRST FLOOR

Entrance Hall
 Lounge / Kitchen: 18'6 x 16'4 (5.64m x 4.98m)
 Bedroom 1: 10'2 x 9'7 (3.10m x 2.92m)
 Bedroom 2: 12'6 x 9'8 (3.81m x 2.95m)
 Bathroom

OUTSIDE

Allocated Parking

First Floor
 Approx. 84.4 sq. metres (908.8 sq. feet)



Call Southwater - 01403 731901 ■ cubittandwest.co.uk

- If buying to let, the energy rating will need to be improved to at least 'E' rating before you can let the property
- Appliances & services are untested, dimensions are approximate and floor plans are not to scale

- Legal advice should be taken to verify fixtures/fittings, planning, alterations and/or lease details



21909328/20231012/LA/LFOG