



Price
£420,000

Freehold

3x  1x  1x 

**Timber Mill, Southwater,
Horsham, West Sussex,
RH13**

OVER 60?

Secure this property
for up to **59% less!**

cubitt&west
Helping you move forwards



Main features

- Charming family home centrally located in Southwater village
- Southerly facing rear garden with side and rear gated access
- Large first floor family bathroom
- Originally built as a two bedroom, however many years ago the seller extended to the side to create more space and a 3rd bedroom
- Parking off road to the rear of the house with access to a large workshop with lighting and power
- No ongoing chain

Accommodation

GROUND FLOOR

Entrance Hall

Kitchen : 13'1 x 7'7 (3.99m x 2.31m)

Lounge / Dining Room : 22'9 x 20'8 (6.94m x 6.30m) narrowing to 8'9 x 9'10 (2.67m x 3.00m)

FIRST FLOOR

Landing

Bedroom 1: 10'10 x 10'8 (3.30m x 3.25m)

Bedroom 2: 13'5 x 8'9 (4.09m x 2.67m)

Bedroom 3: 10'9 x 9'6 (3.28m x 2.90m)

Bathroom: 9'0 x 8'9 (2.75m x 2.67m)

OUTSIDE

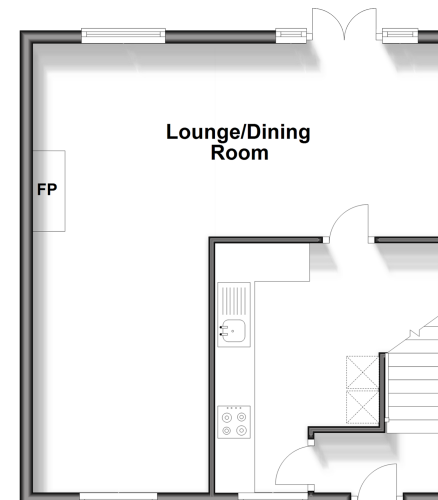
Front Garden

Rear Garden

Allocated Parking

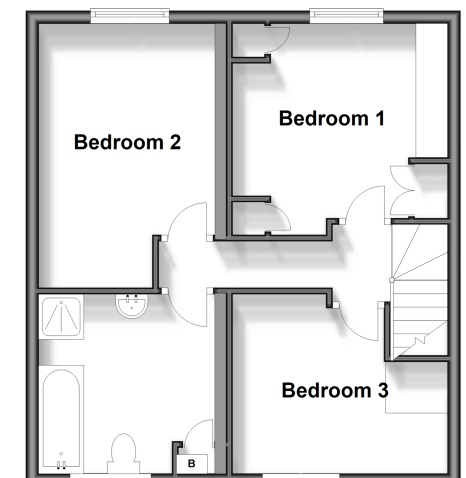
Ground Floor

Approx. 44.1 sq. metres (474.9 sq. feet)



First Floor

Approx. 44.1 sq. metres (474.9 sq. feet)



Call Southwater - 01403 731901 ■ cubittandwest.co.uk

■ Legal advice should be taken to verify fixtures/fittings, planning, alterations and/or lease details
 ■ Through a Homewise Home For Life Plan people aged 60+ can secure this property for up to 59% less, by purchasing a Lifetime Lease.

■ Appliances & services are untested, dimensions are approximate and floor plans are not to scale

